

CMM Software
Page 591



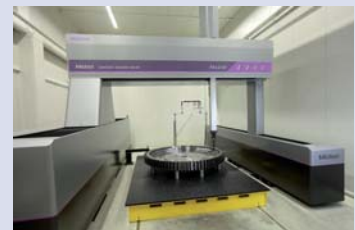
Manual CMMs
Page 595



Small- and Medium Size CMMs
Page 596



Large Size CMMs
Page 600



In-Line and Shopfloor CMMs
Page 604



Measuring Heads, Probes and Styli
Page 607



Fixtures and Enclosures
Page 613



CMM Software

MiCAT Planner

The next generation of CMM software!

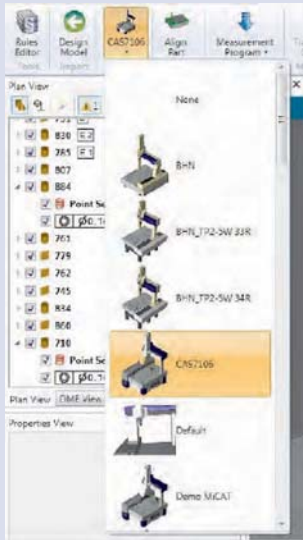
MiCAT Planner drastically reduces the programming time and thus will make your work much more efficient!

Programs will now be made within minutes where it took hours or even days before.

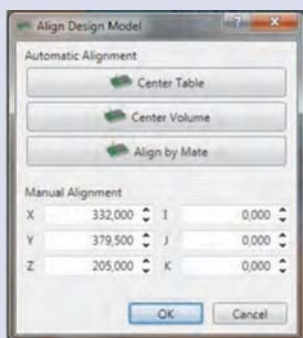
MiCAT planner is using tolerance information inside the CAD file and creates the complete part program by considering your individual measurement strategy and your specific CMM.

This guarantees a collision-free program in the shortest possible time.

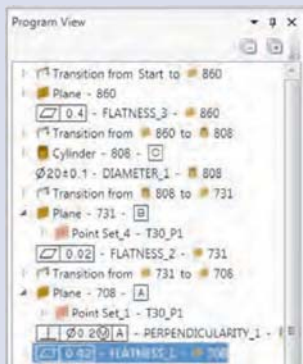
- Automatic program generation in just 5 steps!
- Fully collision controlled
- Program path optimization to reduce measurement time



Step 2: Select the CMM



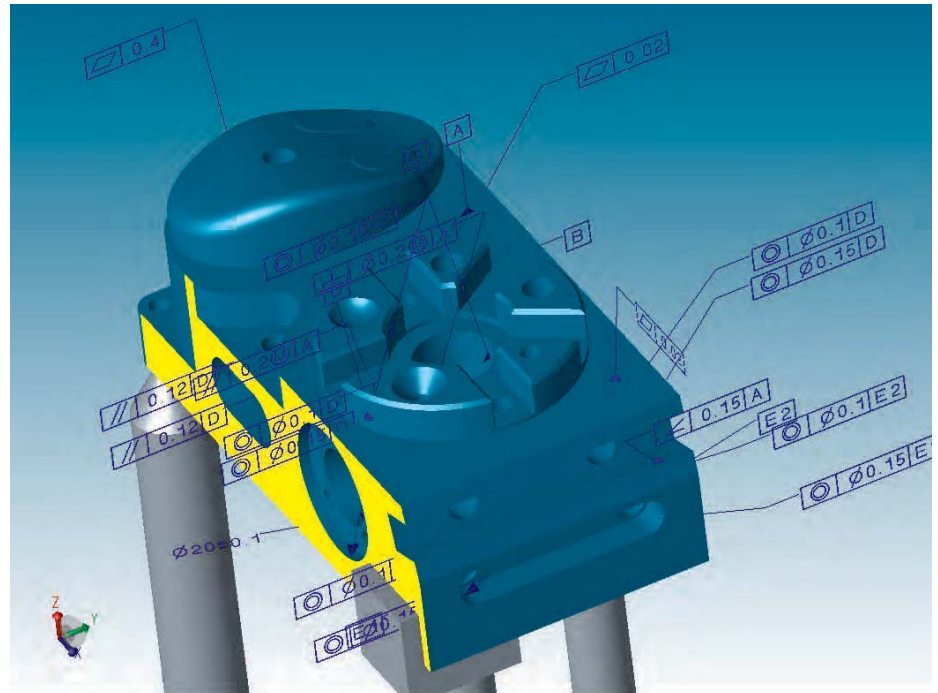
Step 3: Align CAD model



Step 4: Create the part program

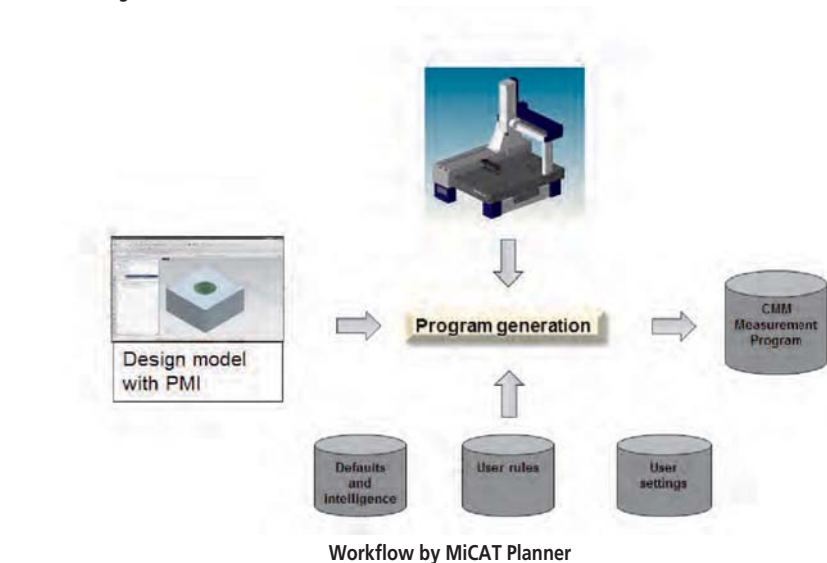


Step 5: Transfer to MCOSMOS



Step 1: Load the CAD model.

- Various CAD translators available: stp, Catia V4/V5, Creo, NX, Parasolid, SolidEdge, SolidWorks, Inventor
- Add missing tolerance information



Workflow by MiCAT Planner



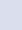
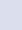
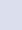
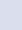








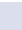
See how fast programs are generated with MiCAT Planner

CMM Software

MCOSMOS - The Modular Software for all Kinds of Measurement

- Organize your measurement programs on the network
- Add comands and instructions to guide the operator
- Create individual reports meeting your customer's needs
- Archieve your results in formats like PDF, XLS, HTML and many other
- SPC with MeasurLink or export data to CAQ systems
- Export detected geometrical elements to CAD systems
- Revision Management for authorised usage of validated partprograms **as standard**
- Meet the requirements of FDA Title 21 CFR Part 11 without extra costs

The following packages are also available for Offline programming.
The so called "**Offline MCOSMOS**" packages allow you to create part programs whilst the CMM is proofing your product quality.

Software package	MCOSMOS Manual	MCOSMOS-1 Basic package	MCOSMOS-2 CAD package	MCOSMOS-3 Full package
Part Manager <ul style="list-style-type: none">• System configuration• Part program handling• Data management• Create report templates				
GEOPAK <ul style="list-style-type: none">• On/Off-line• For prismatic elements• Operator guidance• Parametric programs				
CAT1000P <ul style="list-style-type: none">• CAD programming• For prismatic elements• Collision control• Incl. simulation				
CAT1000S <ul style="list-style-type: none">• CAD programming• Free-form inspection• Surface + edge points• Grahical Reports				
SCANPAK <ul style="list-style-type: none">• For 2D contours• Evaluate + manipulate• Graphical Reports• Data exchange to CAD + NC				

Additional software packages meeting your needs:

MeasurLink:
SPC software with certified AQDEF interface. Allows you to collect data from different vendors and devices. Its database offers collecting and analyzing data from all over the world, analyse your process and create individual reports.

Correct-Plus:
Software for automatic feedback of correction data. It connects NC machining centers with any kind of measurement device like CMM, Small Tools, transducers or analogue probes.

GEARPAK:
Turn your CMM into a gear measurement device! Extend your capabilities, measure gears, worm gears, helical gears. Just input the gear parameters - the rest will be done by GEARPAK: measurement strategy, path generation, probe changes, and of course the measurement report of your gear.

ROUNDPAK-CMM
Special evaluation tool for scanning measurements typically known from form measurement instruments. Topographic views and evaluation of form and position deviations.

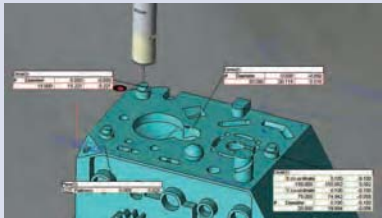
GEO_EDM:
Capture the offset data of your EDM tools and workpieces. GEO_EDM is the solution for measuring the typical geometries in the EDM field, determining offset values and transferring this data to EDM centers. Lots of vendor formats like Charmilles®, Mitsubishi®, Ingersoll or System 3R® are supported.



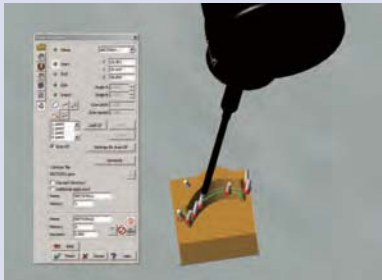
PartManager



GEOPAK



CAT1000P



CAT1000S



For details, please ask for the MCOSMOS brochure.



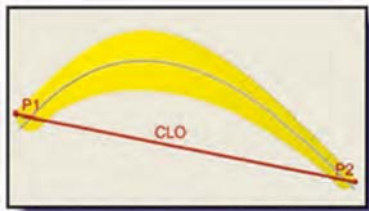
Mitutoyo offers you over 600 styli plus highly specialised equipment for your measuring task.

CMM Software

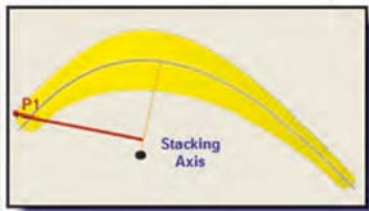
MAFIS Express - Rapid Air Foil Inspection Software

Mitutoyo introduces the fastest way for inspecting blades and blisks: MAFIS Express.

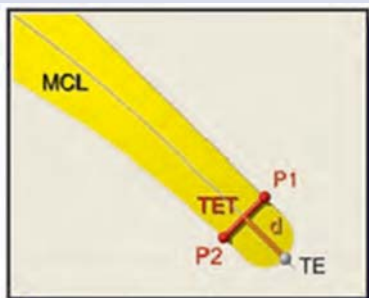
- Increases your throughput by time savings up to 90%
- Intuitive programming and easy handling
- For many kinds of airfoils like blades, blisks, gas turbines
- Easy Off-line programming on the CAD model
- Individual setting of the inspection routine: measure all or just some dedicated intersections
- Support of standards set by Rolls-Royce®, P&W, Siemens®, GE®, Honeywell®, SNECMA, Turbomeca® and others
- Ideal with the Revo® or SP25M probe heads



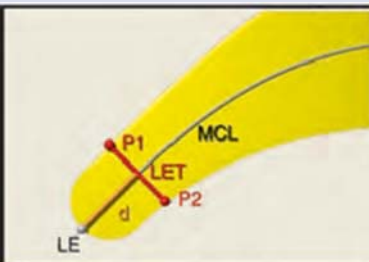
Overall Chord Length



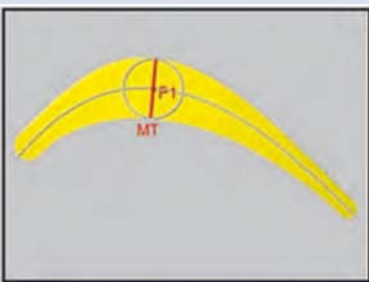
Stacking Axis



Trailing Edge – thickness on specific distance



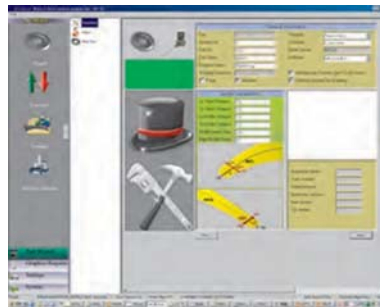
Leading Edge – thickness on specific distance



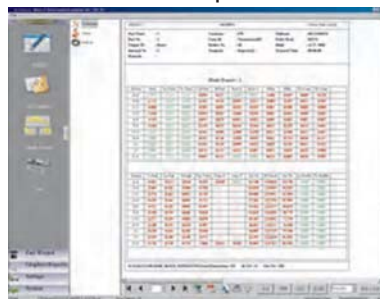
Maximum thickness



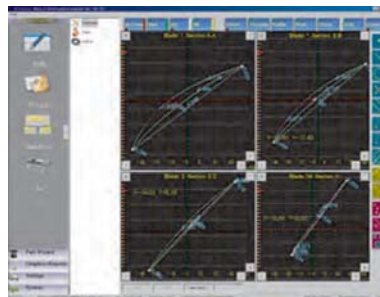
Mitutoyo offers you over 600 styli plus highly specialised equipment for your measuring task.



MAFIS Express



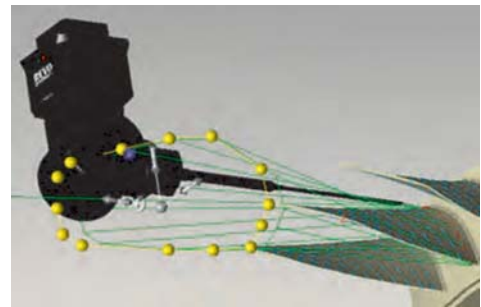
Numerical evaluation



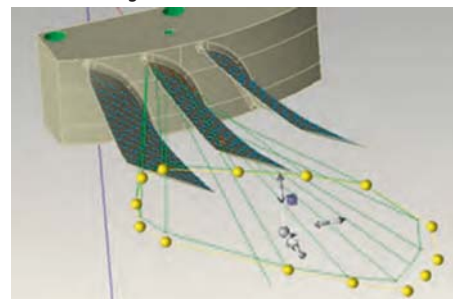
Graphical evaluation



Take a look how quick air foils are inspected by MAFIS Express



Setting intersections on the CAD model



Optimizing the probe path

CMM Software

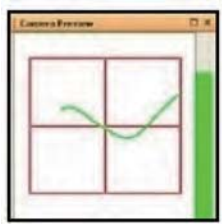
MSURF-S and MSURF-I are dedicated for line laser scanner measurement with SurfaceMeasure series by Mitutoyo.

MSURF-S

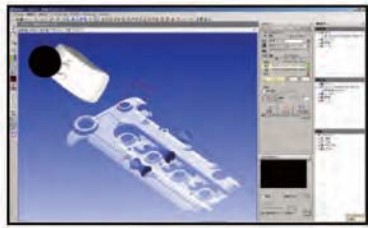
- Scanning paths can be created by simply defining three items : the scanning starting point, the scanning length, and the scanning width
- Scanning paths can be stored as measurement macros
- Point cloud data obtained from scanning can be exported in text or STL format
- MSURF-S can be started from MCOSMOS

MSURF-I

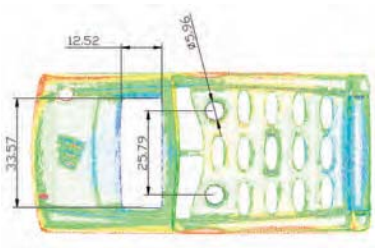
- Importing CAD data
- Feature-by-feature comparison
- Comparison of cross-sectional shapes



Screen sample from MSURF-S



Screen sample from MSURF-S

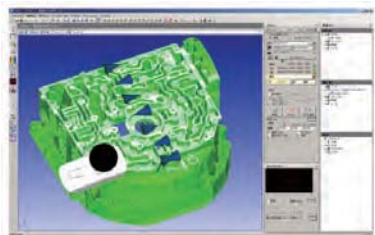


Screen sample from MSURF-I

MSURF-G

Off-line version for part program generation

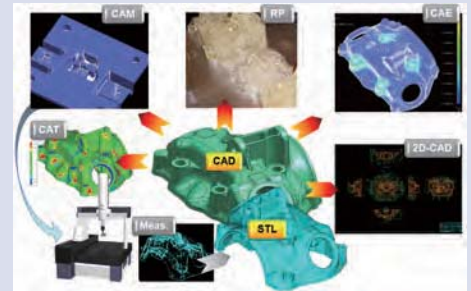
- Semi-automatic function for creating measurement paths with optimum probe orientation
- Detection of collision between the probe and the workpiece model
- Generation of simulated data for the point cloud expected to be obtained through scanning
- Displaying measurement movements (scanner movements) in animation



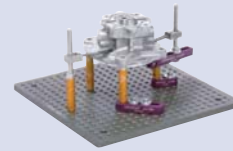
Screen sample from MSURF-G



Screen sample from MSURF-G



Screen sample from MSURF-S/I



Mitutoyo eco-fix fixture kits:

- flexible & quick setup
- time & cost saving
- easy adaption of product changes



Mitutoyo offers you over 600 styli plus highly specialised equipment for your measuring task - Refer to the small tool section of the catalogue for detailed information.

CRYSTA-PLUS M Series

Series 196 - Manual CMM

This is a manual floating type coordinate measuring machine designed to give you very high accuracy in a wide range of applications, from simple dimensional to complex form measurement. The Crysta-Plus M offers you the following benefits:

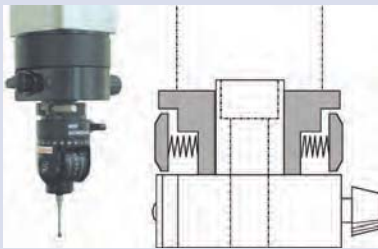
- High-precision air bearings and lightweight moving members give you very smooth operation.
- Versatile for connection with powerful MCOSMOS software or simple QM-Data 300D calculator
- Continuous fine feed over the entire measuring range.
- You can also add an optional temperature compensation system.

Specifications

Guide system	Air bearing
Axis clamp	One-touch air clamp
Fine feed	Entire range
Digital step	0,5 µm



One-touch air clamp and fine feed for rapid and easy positioning



Ergonomically designed guide grip on Z-axis for reliable measurement (only for Crysta-Plus M776 and M7106)

Accuracy is specified for the following environmental conditions for the CMM

Temperature range		19°C - 21°C	15°C - 30°C*
Temperature change	Per hour	-	2 K
	Per 24 hours	-	5 K
Temperature gradient	Vertical	0.5 K/m	1 K/m
	Horizontal	0.5 K/m	1 K/m

*The values shown in bold in the table above apply when using the temperature compensation system (optional):



CRYSTA-Plus M brochure on request



Mitutoyo offers you over 600 styli plus highly specialised equipment for your measuring task.



Crysta-Plus M574



Crysta-Plus M7106

Crysta-Plus M Models:

No.	Model	Range [mm]	$E_{0,MPE}^{(1)}$	$P_{FTU,MPE}$ [µm]	Loading Weight [kg]	Loading Height [mm]	Mass [kg]	Temp.-Unit ⁽²⁾
196-683	443	400 x 400 x 300	(3+0,4L/100) µm	4	180	480	410	
196-684D	443	400 x 400 x 300	(3+0,4L/100) µm	4	180	480	410	
196-591	544	500 x 400 x 400	(3,5+0,45L/100) µm	4	180	595	495	
196-592	544	500 x 400 x 400	(3,5+0,45L/100) µm	4	180	595	495	
196-596	574	500 x 700 x 400	(3,5+0,45L/100) µm	4	180	595	615	
196-597	574	500 x 700 x 400	(3,5+0,45L/100) µm	4	180	510	615	
196-342	776	700 x 700 x 600	(3,5+0,45L/100) µm	5	500	800	1560	
196-352	7106	700 x 1000 x 600	(3,5+0,45L/100) µm	5	800	800	1800	

⁽¹⁾ According to ISO 10360-2:2010 when using probe TP20. L= measured length [mm].

⁽²⁾ Temperature compensation unit for temperature range 15-30°C (see table in coloured area).

DATA PROCESSING OPTIONS:



MCOSMOS

CRYSTA-APEX S Series

Series 191 - Standard CNC CMM

The CRYSTA-APEX S Series is a high performance, cost effective coordinate measuring machine, designed and constructed according to Mitutoyo's extensive experience in CNC CMM technology. It offers you the following benefits:

- Lightweight materials and an innovative machine structure deliver high motion stability, accuracy and affordability.
- The temperature compensation function (16°C to 26°C) allows you to take accurate measurements even on the shop floor.
- Compatible vision and scanning probe technologies give you flexible and effective measurement capabilities.



CRYSTA-Apex S9106

CRYSTA-Apex S Models:

No.	Model	Range [mm]	Loading Weight [kg]	Loading Height [mm]	Mass [kg]
191-244	544	500 x 400 x 400	180	545	515
191-248	574	500 x 700 x 400	180	545	625
191-252	776	700 x 700 x 600	800	800	1675
191-254	7106	700 x 1000 x 600	1000	800	1951
191-292	9106	900 x 1000 x 600	1200	800	2231
191-292H	9108	900 x 1000 x 800	1200	1000	2261
191-294	9166	900 x 1600 x 600	1500	800	2868
191-294H	9168	900 x 1600 x 800	1500	1000	2898
191-296	9206	900 x 2000 x 600	1800	800	3912
191-296H	9208	900 x 2000 x 800	1800	1000	3942

*Multi-Wire:CMM is ready for touch trigger probe, scanning probe, optical probe including laser scanner probe.

Specifications

Digital step	0,1 µm
$E_{0,MPE}^{(1)}$	$(1,7+0,3L/100) \mu m^{(2)}$ $(1,7+0,4L/100) \mu m^{(3)}$ L=measured length [mm]
$P_{FTU,MPE}$	1,7 µm
MPE_{THP}	2,3 µm
Drive speed	520 mm/s

⁽¹⁾ According to ISO 10360-2:2010 when using probe SP25M, module SM25-1, stylus Ø4x50mm.

⁽²⁾ For temperature range 18°C - 22°C.

⁽³⁾ For temperature range 16°C - 26°C.

Accuracy is specified for the following environmental conditions for the CMM:

Temperature range		18°C - 22°C	16°C - 26°C
Temperature change	Per hour	1 K	1 K
	Per 24 hours	2 K	5 K
Temperature gradient	Vertical	1 K/m	1 K/m
	Horizontal	1 K/m	1 K/m



Joystick controller No. 06AAN641 (optional)

Features:

- 2 Levers
- Speed control
- Axis clamping
- Change operating position
- Store position



Mitutoyo eco-fix fixture kits:

- flexible & quick setup
- time & cost saving
- easy adaption of product changes



CRYSTA-Apex S brochure on request



Scan QR Code with your mobile device and watch our product videos on YouTube

CRYSTA-APEX S1200 Series

Specifications

Scale	High accuracy linear encoder
Digital step	0,1 µm
$E_{0,MPE}^{(1)}$	$(2,3+0,4L/100) \mu m^{(2)}$ L = measured length [mm]
$P_{FTU,MPE}$	2 µm
MPE_{THP}	2,8 µm
Guide system	Air bearings on each axis
Drive speed	520 mm/s

⁽¹⁾ According to ISO 10360-2:2010 when using probe SP25M, module SM25-1, stylus Ø4x50mm.

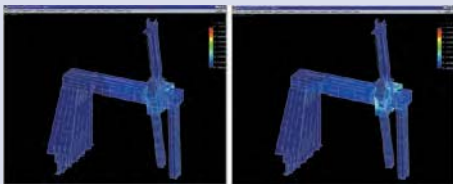
⁽²⁾ For temperature range 16°C-26°C.



Temperature compensation system
(temperature sensors)

Accuracy is specified for the following environmental conditions for the CMM:

Temperature range		18°C - 22°C	16°C - 26°C
Temperature change	Per hour	1 K	1 K
	Per 24 hours	2 K	5 K
Temperature gradient	Vertical	1 K/m	1 K/m
	Horizontal	1 K/m	1 K/m



The machine structure has been optimized using
FEM (Finite-element Method) and modal analysis



Mitutoyo offers you over 600 styli plus highly specialised equipment for your measuring task - Refer to the small tool section of the catalogue for detailed information.



Refer to the CRYSTA-Apex S brochure

Series 191 - Standard CNC CMM

The CRYSTA-APEX S Series is a high performance, cost effective coordinate measuring machine, designed and constructed according to Mitutoyo's extensive experience in CNC CMM technology. It offers you the following benefits:

- Lightweight materials and an innovative machine structure deliver high motion stability, accuracy and affordability.
- The temperature compensation function (16°C to 26°C) allows you to take accurate measurements even on the shop floor.
- Compatible vision and scanning probe technologies give you flexible and effective measurement capabilities.



CRYSTA-Apex S 122010

CRYSTA-Apex S Models:

No.	Model	Range [mm]	Loading Weight [kg]	Loading Height [mm]	Mass [kg]
191-392	121210	1200 x 1200 x 1000	2000	1200	4050
191-394	122010	1200 x 2000 x 1000	2500	1200	6150
191-396	123010	1200 x 3000 x 1000	3000	1200	9110

STRATO-APEX Series

Series 355 - High accuracy CNC CMM

This a high accuracy CNC coordinate measuring machine that allows you to get accurate results at lightning speed.

The STRATO-APEX Series offers you the following benefits:

- High measurement accuracy and high-speed motion
- High-performance scanning.
- Ultra high precision scales on each axis.
- Anti-vibration system reduces the impact of nearby vibration sources (optional for 574)



STRATO-Apex 9106

STRATO-Apex Models:

No.	Model	Range [mm]	$E_{0,MPE}^{(1)}$	$P_{FTU,MPE}$	MPE_{THP}	Loading Weight [kg]	Loading Height [mm]	Mass [kg]
355-522	574	500 x 700 x 400	$(0,7+0,25L/100) \mu m$	0,7	1,8	180	570	1530
355-502	776	700 x 700 x 600	$(0,9+0,25L/100) \mu m$	0,9	1,8	500	770	1895
355-507	7106	700 x 1000 x 600	$(0,9+0,25L/100) \mu m$	0,9	1,8	800	770	2180
355-512	9106	900 x 1000 x 600	$(0,9+0,25L/100) \mu m$	0,9	1,8	800	770	2410
355-517	9166	900 x 1600 x 600	$(0,9+0,25L/100) \mu m$	0,9	1,8	1200	770	3085

⁽¹⁾ According to ISO 10360-2:2010 when using probe SP25M, module SM25-1, stylus ø4x50 mm.
L=measured length [mm]

Specifications

Digital step	0,02 μm
Drive speed	519 mm/s
3D Acceleration	2598 mm/s ²

Accuracy is specified for the following environmental conditions for the CMM:

Temperature range		19°C - 21°C
Temperature change	Per hour	1 K
	Per 24 hours	2 K
Temperature gradient	Vertical	1 K/m
	Horizontal	1 K/m



Mitutoyo eco-fix fixture kits:

- flexible & quick setup
- time & cost saving
- easy adaption of product changes



Refer to the STRATO-Apex brochure

Specifications

Drive speed	200 mm/s
3D Acceleration	980 mm/s ²
Digital step	0,01 µm
P _{FTU,MPE}	0,4 µm
E _{0,MPE} ⁽¹⁾	(0,28+0,1L/100) µm

(¹) According to ISO 10360-2:2010 when using MPP-310Q probe system.
L=measured length [mm]

Accuracy is specified for the following environmental conditions for the CMM

Temperature range	20±1°C	
Temperature change	Per hour	0,5 K
	Per 24 hours	1 K/m
Temperature gradient	Vertical	1 K/m
	Horizontal	1 K/m



CMM calibration using a virtually zero thermal expansion glass gauge



Mitutoyo offers you over 600 styli plus highly specialised equipment for your measuring task.



Refer to the LEGEX brochure

LEGEX Series

Series 356 - Ultra-High Precision Premium CNC CMM

This LEGEX Series is the most accurate CNC coordinate measuring machine that gives you the ultimate accuracy.

The LEGEX Series offers you the following benefits:

- Rigorous analysis of all possible error-producing factors, and elimination or minimisation of their effects, delivers unsurpassed accuracy of 0,28µm.
- Ultra-high accuracy crystallised-glass scale with the ultra-low expansion coefficient of 0,01x10⁻⁶/K is used on each axis.
- The fixed bridge structure and precision air bearings, running on highly rigid guideways, give you superior motion stability and ultra-high geometrical accuracy.
- You can use many different types of optional probe systems, including touch-trigger probes, laser scanning probes, and a vision measuring probe.



Legex 9106

LEGEX Models:

No.	Model	Range [mm]	Loading Weight [kg]	Loading Height [mm]	Mass [kg]
356-403	574	500 x 700 x 450	250	701	3500
356-413	774	700 x 700 x 450	500	701	5000
356-423	776	700 x 700 x 600	500	851	5100
356-433	9106	900 x 1000 x 600	800	851	6500

CRYSTA-APEX S Series

Series 191 - Standard CNC CMM

Large size and high performance CNC CMM, designed to provide high accuracy in various environment, ready for touch trigger probe, scanning probe, optical probe and laser scanner probe.

- Proven bridge type construction
- High rigidity air-bearing guiding on every axis
- High accuracy
- High speed and acceleration
- Temperature compensation from 16° to 24°C
- Glass scale with high resolution 0,1 µm
- Granite working table with M8 threads
- Multi-Function Joystick Box including two levers and speed adjustment
- Optional with anti-vibration table



CRYSTA-Apex S 163012

CRYSTA-Apex S Models:

No.	Model	Range [mm]	$E_{0,MPE}^{(1)}$	$P_{FTU,MPE}$ [µm]	MPE_{THP} [µm]	Loading Weight [kg]	Loading Height [mm]	Mass [kg]
191-286EU	162012	1600 x 2000 x 1200	(3,3+0,45L/100) µm	5	5	3000	1400	9300
191-266EU	163012	1600 x 3000 x 1200	(3,3+0,45L/100) µm	5	5	3500	1400	10600
191-276EU	164012	1600 x 4000 x 1200	(3,3+0,45L/100) µm	5	5	4500	1400	14800
191-286HEU	162016	1600 x 2000 x 1600	(4,5+0,55L/100) µm	6	6	3000	1800	9350
191-266HEU	163016	1600 x 3000 x 1600	(4,5+0,55L/100) µm	6	5	3500	1800	10650
191-276HEU	164016	1600 x 4000 x 1600	(4,5+0,55L/100) µm	6	5	4500	1800	14850
191-366HEU	203016	2000 x 3000 x 1600	(4,5+0,8L/100) µm	6	6	4000	1800	14100
191-376HEU	204016	2000 x 4000 x 1600	(4,5+0,8L/100) µm	6	6	5000	1800	19400

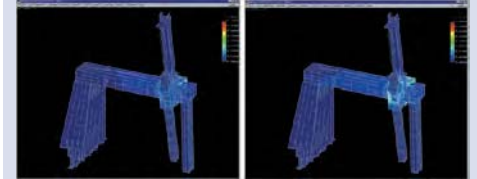
⁽¹⁾According to ISO 10360-2:2010 when using probe SP25M, module SM25-1, stylus Ø4x50mm.
L= measuring length [mm]

Specifications

Digital step	0,1 µm
Drive speed	693 mm/s



Joystick controller



The machine structure has been optimized using FEM (Finite-Element Method) and modal analysis



Mitutoyo eco-fix fixture kits:

- flexible & quick setup
- time & cost saving
- easy adaption of product changes



Refer to the CRYSTA-Apex S brochure

CRYSTA-APEX C Gantry Series

Specifications

Digital step	0,1 µm
Drive speed	500 mm/s

Accuracy is specified for the following environmental conditions for the CMM:

Temperature range		18°C - 22°C	16°C - 26°C
Temperature change	Per hour	1 K	1 K
	Per 24 hours	2 K	5 K
Temperature gradient	Vertical	1 K/m	1 K/m
	Horizontal	1 K/m	1 K/m

Safety System

For this type series, Mitutoyo offers a customized safety system. Depending on the local situation in your facility, Mitutoyo will propose a tailor-made solution meeting the requirements of the Machinery Directive.

Foundation

This type series always requires a special foundation. Please contact your local Mitutoyo partner for further details.



Mitutoyo eco-fix fixture kits:

- flexible & quick setup
- time & cost saving
- easy adaption of product changes

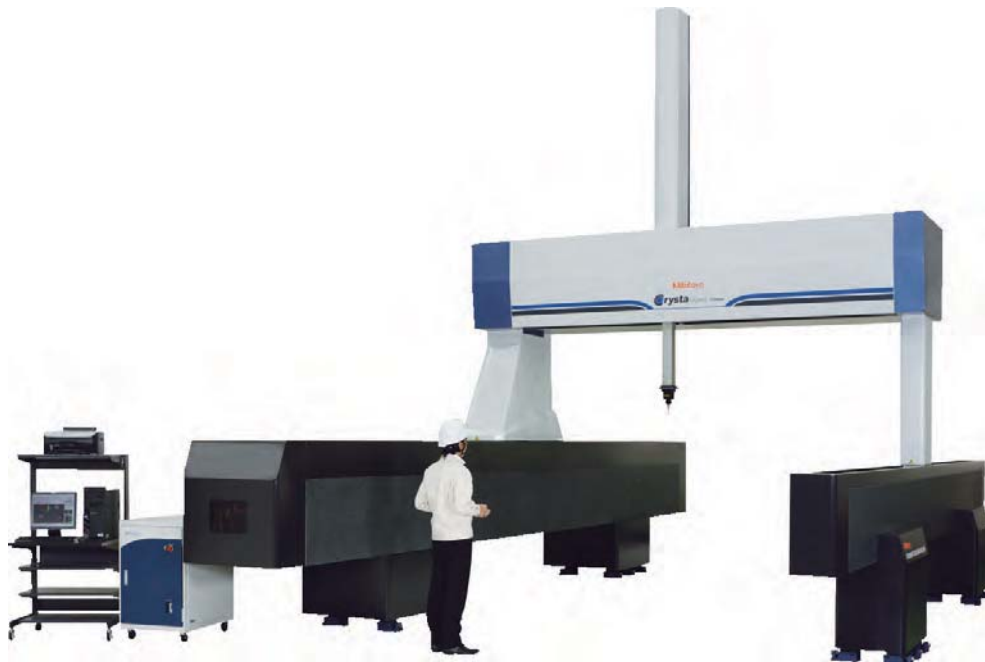


Refer to the CNC Coordinate Measuring Machines brochure

Series 191 - Standard Large CNC CMM

High precision gantry type CNC CMM, designed to provide top scanning performance for your largest workpieces, ready for touch trigger probe, scanning probe, optical probe, laser scanner probe.

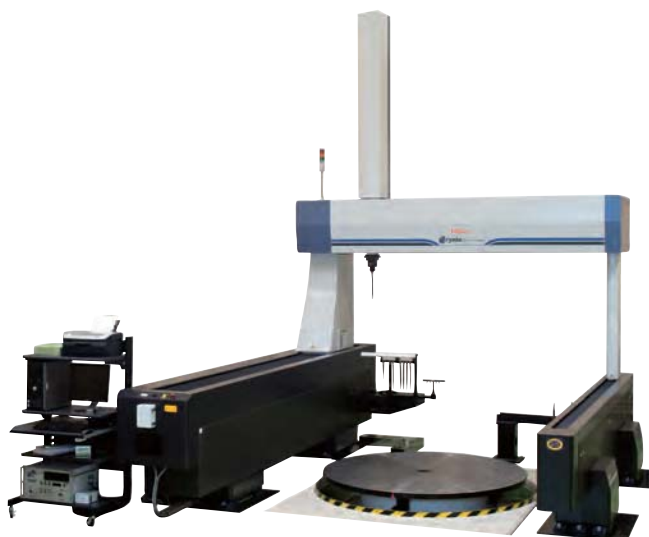
- Improve structural rigidity gantry type construction with compensation technology
- High accuracy
- High speed and acceleration
- Temperature compensation from 18° to 22°C
- High precision glass scale with resolution 0,1 µm
- Multi-Function Joystick Box including two levers and a speed adjustment
- Available in many different sizes from 2000 x 3000 x 1500 mm to 3000 x 5000 x 2000 mm.



CRYSTA-Apex C 203016 G

No.	Range [mm]	$E_{0,MPE}^{(1)}$	$P_{FTU,MPE}$ [µm]	MPE_{THP} [µm]	Mass [kg]
Crysta-Apex C 203016 G	2000 x 3000 x 1600	(6+0,6L/100) µm	6	6,5	12000
Crysta-Apex C 306020 G	3000 x 6000 x 2000	(8+0,7L/100) µm	8	8,5	16000

(¹) According to ISO 10360-2:2010 when using probe SP25M, module SH25-1, stylus ø4x50 mm.
L= measured length [mm].



STRATO-APEX Series

Series 355 - High accuracy CNC CMM

High precision large size bridge type CNC CMM, designed to provide top scanning performance with high accuracy, ready for touch trigger probe, scanning probe, optical probe, laser scanner probe.

- Improve structural rigidity bridge type construction with compensation technology
- High accuracy
- High speed and acceleration
- Temperature compensation from 18° to 22°C
- High precision glass scale with resolution 0,05 µm
- Integrated vibration-damping units with auto-levelling air springs
- Granite working table with M8 threads
- Multi-Function Joystick Box including two levers and a speed adjustment



STRATO-Apex 163012

STRATO-Apex Models:

No.	Model	Range [mm]	E _{0,MPE} ⁽¹⁾	P _{FTU,MPE} [µm]	MPE _{THP} [µm]	Loading Weight [kg]	Loading Height [mm]	Mass [kg]
355-532	162012	1600 x 2000 x 1200	(2,5+0,4L/100) µm	2,3	2,5	3500	1350	9550
355-534	162016	1600 x 2000 x 1600	(3+0,4L/100) µm	2,8	3	3500	1750	9600
355-536	163012	1600 x 3000 x 1200	(2,5+0,4L/100) µm	2,3	2,5	4000	1350	14000
355-538	163016	1600 x 3000 x 1600	(3+0,4L/100) µm	2,8	3	4000	1750	14050

⁽¹⁾ According to ISO 10360-2:2010 when using probe SP25M, module SM25-1, stylus ø4x50 mm.
L= measured length [mm].

Specifications

Digital step	0,05 µm
Drive speed	606 mm/s

Accuracy is specified for the following environmental conditions for the CMM:

Temperature range		18°C - 22°C
Temperature change	Per hour	1 K
	Per 24 hours	2 K
Temperature gradient	Vertical	1 K/m
	Horizontal	1 K/m



Mitutoyo offers you over 600 styli plus highly specialised equipment for your measuring task.



Refer to the STRATO-Apex brochure

Specifications

Digital step	0,1 µm
Drive speed	520 mm/s



Accuracy is specified for the following environmental conditions for the CMM:

Temperature range		18°C - 22°C
Temperature change	Per hour	1 K
	Per 24 hours	2 K
Temperature gradient	Vertical	1 K/m
	Horizontal	1 K/m



Scanning with probe SP80 and 100 mm styli.

Safety System

For this type series, Mitutoyo offers a customized safety system. Depending on the local situation in your facility, Mitutoyo will propose a tailor-made solution meeting the requirements of the Machinery Directive.

Foundation

This type series always requires a special foundation. Please contact your local Mitutoyo partner for further details.



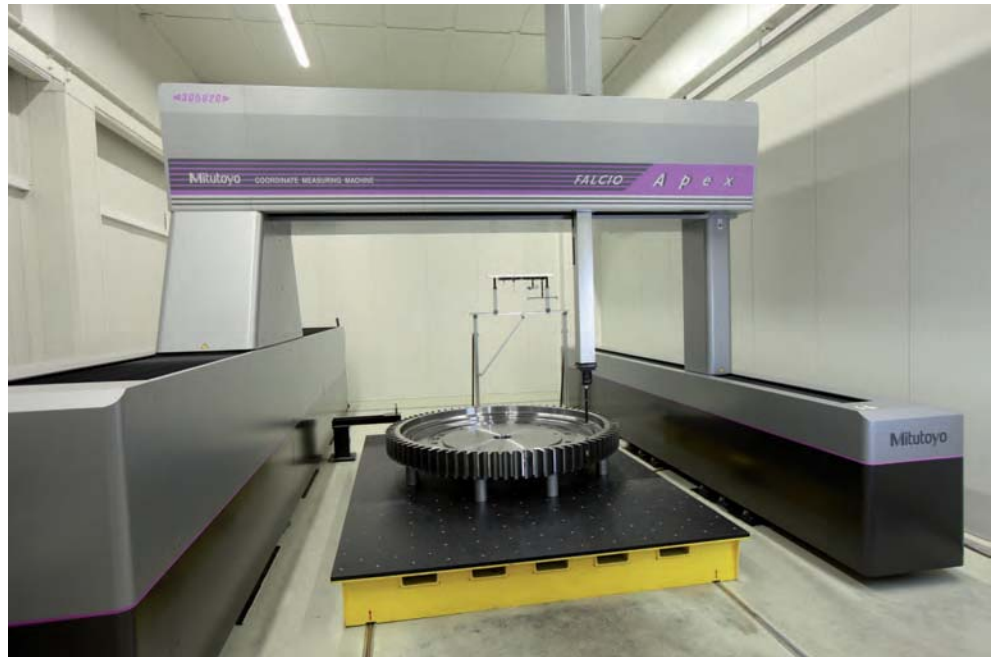
Mitutoyo offers you over 600 styli plus highly specialised equipment for your measuring task.

FALCIO-APEX Gantry Series

Series 355 - High accuracy Large CNC CMM

High precision gantry type CNC CMM, designed to provide top scanning performance for your largest workpieces, ready for touch trigger probe, scanning probe, optical probe, laser scanner probe.

- Improve structural rigidity gantry type construction with compensation technology
- High accuracy
- High speed and acceleration
- Temperature compensation from 18° to 22°C
- High precision glass scale with resolution 0,1 µm
- Multi-Function Joystick Box including two levers and a speed adjustment
- Available in many different sizes from 2000 x 3000 x 1600 mm to 3000 x 5000 x 2000 mm.



FALCIO-Apex 305020 G measuring a gear for a wind turbine engine

No.	Range [mm]	$E_{0,MPE}^{(1)}$	$P_{FTU,MPE}$ [µm]	MPE_{THP} [µm]	Mass [kg]
FALCIO-Apex 203015 G	2000 x 3000 x 1500	(3,5+0,45L/100) µm	3,5	3,8	12000
FALCIO-Apex 305020 G	3000 x 5000 x 2000	(4,4+0,45L/100) µm	4	4,2	16000

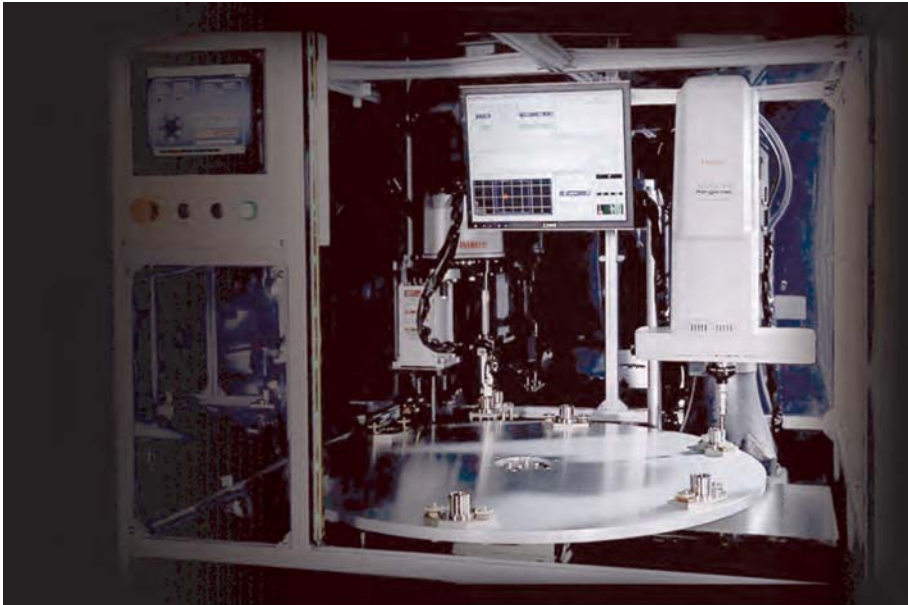
⁽¹⁾ According to ISO 10360-2:2010 when using probe SP25M, moule SM25-1, stylus Ø4x50 mm.
L=measured length [mm].



MACH KO-GA-ME Series

Series 357 - Agile Measurement System

- Compact in-line system
- High-speed measurements
- For scanning and touch-trigger measurements
- Ideal for single feature inspection
- Extremely Small Footprint - perfect for automated cells
- Also as stand alone solution
- Designed for production environment 10°C-35°C



In-line Application example with MACH Ko-ga-me

MACH Ko-ga-me Models:

No.	Model	Range [mm]	Mass [kg]
357-165	12128-3V	120 x 120 x 80	36

Specifications

Digital step	0,02 μm
$E_{0,MPE}^{(1)}$	(2+0,5L/100) μm (19-21°C) (3+0,72L/100) μm (10-35°C) L = measured length [mm]
$P_{FTU,MPE}$	2 μm
MPE_{THP}	2,5 μm
Drive speed	340 mm/s
3D Acceleration	6750 mm/s ²



MACH Ko-ga-me 12128-3V with optional stand



- Mitutoyo eco-fix fixture kits:
- flexible & quick setup
 - time & cost saving
 - easy adaption of product changes



Refer to the INLINE Measuring systems brochure



Take a look how MACH Ko-ga-me can boost your productivity

MACH-3A 653

Series 360 - High-Speed In-Line CMM

Super high speed and acceleration Production-line Coordinate Measuring Machine with horizontal spindle, designed for intensive use in hostile workshop environment.

- Super High speed and acceleration
- Drastic reduction of the measurement cycle compared with any conventional CMM
- All in One Compact design to minimize the foot print in the workshop and to improve the dust resistance
- Work piece handling and routing in the same posture as for other horizontal spindle machining centres
- Control unit and PC are installed in the dust-tight rack with heat exchanger.
- Ease-of-maintenance construction and air-free operation using high accuracy linear ball bearing
- Temperature compensation from 5°C to 40°C
- Glass scale with high resolution 0,1 µm
- Safety joystick box with deadman switch and speed adjustment
- Optional with index table for higher flexibility

Specifications

Digital step	0,1 µm
$E_{0,MPE}^{(1)}$	(2,5+0,35L/100) µm ⁽²⁾ (3,9+0,65L/100) µm ⁽³⁾
$P_{FTU,MPE}$	2,5 µm
Drive speed	1212 mm/s

⁽¹⁾According to ISO 10360-2:2010 when using probe TP7M, stylus ø4x50 mm. L= measured length [mm].

⁽²⁾For temperature range 19°C-21°C.

⁽³⁾For temperature range 5°C-40°C.

Accuracy is specified for the following environmental conditions for the CMM

Temperature range		5°C - 40°C
Temperature change	per hour	2 K
	per 24 hours	10 K
Temperature gradient	Vertical	1 K/m
	Horizontal	1 K/m

Safety System

For this type series, Mitutoyo offers a customized safety system. Depending on the local situation in your facility, Mitutoyo will propose a tailor-made solution meeting the requirements of the Machinery Directive.



Refer to the INLINE Measuring systems brochure



Take a look how MACH-3A 653 can boost your productivity



No.	Model	Range [mm]
360-412	MACH-3A 653	600 x 500 x 285 mm

MACH-V 9106

Series 360 - In-line type CNC CMM

High speed and acceleration Production-line Coordinate Measuring Machine with vertical spindle, designed for intensive use in hostile workshop environment.

- Higher speed and accuracy with barycentric drive
- Improved dust resistance by installing all drive system and scale units in the dust-tight enclosure on the machine top
- Control unit and PC are installed in the dust-tight rack
- Space-saving design helps installation in a production line
- Flexible loading options due open access to the measuring area
- Ease-of-maintenance construction and air-free operation using high accuracy linear ball bearing
- Temperature compensation from 5° to 35°C
- Glass scale with high resolution 0,1 µm.



MACH-V 9106

No.	Model	Range [mm]
360-224	MACH-V9106	900 x 1000 x 600



Scan QR Code with your mobile device and watch our product videos on YouTube

Specifications

Digital step	0,1 µm
E _{0,MPE} ⁽¹⁾	(2,5+0,35L/100) µm ⁽²⁾ (3,6+0,58L/100) µm ⁽³⁾
P _{FTU,MPE}	2,5 µm
Drive speed	866 mm/s

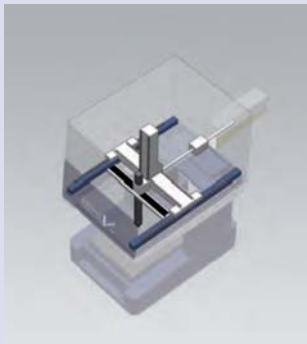
⁽¹⁾According to ISO 10360-2:2010 when using probe TP7M, stylus ø4x50 mm. L=measured length [mm].

⁽²⁾For temperature range 19°C-21°C.

⁽³⁾For temperature range 5°C-35°C.

Accuracy is specified for the following environmental conditions for the CMM:

Temperature range	5°C - 35°C	
Temperature change	per hour	2 K
	per 24 hours	10 K
Temperature gradient	Vertical	1 K/m
	Horizontal	1 K/m



Safety System

For this type series, Mitutoyo offers a customized safety system. Depending on the local situation in your facility, Mitutoyo will propose a tailor-made solution meeting the requirements of the Machinery Directive.



Mitutoyo eco-fix fixture kits:

- flexible & quick setup
- time & cost saving
- easy adaption of product changes



CMM Probes

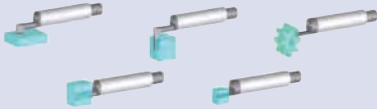
SURFTEST Probe

Surface Roughness Measurement directly on the CMM!

This latest Mitutoyo probe head closes the gap between typical dimensional CMM measurements and surface roughness inspection. Instead of having to take the workpiece to another measuring instrument or using additional portable systems, the SURFTEST Probe adds roughness measurement capability to your CMM and so avoids all the cost and inconvenience of additional systems. It brings the proven technology of the SJ-310 series to the CMM with all its highly capable range of detectors developed for handling specialist applications such as roughness measurement on gears, inside small holes or deep grooves, in addition to simple flat surface measuring tasks.



SURFTEST Probe



Optional detectors



Scan QR Code with your mobile device and watch our product videos on YouTube



SurfaceMeasure

SurfaceMeasure

Mitutoyo's Laser Line Scanning Probe

- Suitable for inspection by CAD comparison and reverse engineering purposes.
- Autojoint mounting compatible with PH10M/MQ and automatic probe change racks.
- Automatic laser intensity and camera sensitivity adjustment according to the surface texture.
- Powder-sprayless measurement even for glossy or multiple colors surfaces.
- High Speed Scanning by High Acquisition rate of 75000 points/sec (1000 points/line).
- Scanning uncertainty: 12 μm .
- Maximum scanning width: 60 mm.
- Working Distance: 93 mm.



QVP (Quick Vision Probe)

QVP

Mitutoyo's Vision Probe System for CMMs

- Fast optical measurements – the perfect choice for small features and soft materials
- Ideal in combination with tactile probes
- Prepared for automatic probe change
- Four objective lenses offer different optical magnification
- From 0,375 x to 3,75 x
- White LED ring light
- White LED coaxial light

CMM Probes

MPP-310Q

Ultra-High Precision Scanning Probe

- High resolution of 0,01 μm
- Measuring range ± 1 mm
- Extremely low measuring forces of 0,03 N
- Styli length up to 200 mm
- Air bearing for smooth measurements
- Axis clamping for scanning on slanted or arched surfaces

PH20

Rapid tactile measurements at any probe angle

- Head touch for improved repeatability
- Feature-based calibration for improved accuracy
- Probe change with TP20 moduls
- Allowing subsequent measurement at any head angle
- Full support in MCOSMOS

Revo

5-axis measurement technology

- Rapid scanning at any angle
- dynamic 2-axis head provides most of the stylus motion
- High accuracy and repeatability
- Scanning with 5-axes of simultaneous motion allows unparalleled measurement flexibility
- 'Head-touches' take measurement points faster, with improved accuracy and repeatability
- 5-axis motion eliminates time spent indexing the head



5-axis scanning options with CRYSTA-Apex and Revo



MPP-310Q



PH20



Revo



Refer to the Measuring Heads brochure

CMM Probes

Scanning probe systems



SP80



SP25M



SP600M

Touch-trigger probe systems



TP7M
High accuracy type



TP200
Compact and high accuracy (stylus change type)



SCR200
Rack



Micro Touch Probe
UMAP-CMM



TP20
Compact type



MCR20
Rack



MH20i / MH20
Manual Probes

Probe heads



PH10M
Motor drive index type



MIH
Manual index type



PH1
Simple manual type



TP8
Manual Indexable
Probe



CMM Probes brochure on demand

Styli Kits

Mitutoyo offers you over 600 styli plus highly specialised equipment within a wide range of selected materials like steel, aluminium, ceramics, ruby, zirconium oxide or silicon nitride.

Styli Kit M2 Addition

No.	Contents	Description	ø mm	L mm
K651382		wooden box		
	1x Part No. K651058	5-way stylus holder M2		7,5
	1x Part No. K651040	Extension steel M2		30
	1x Part No. K651039	Extension steel M2		20
	4x Part No. K651038	Extension steel M2		10
	1x Part No. K651022	Stylus steel-ruby M2	4	20
	1x Part No. K651021	Stylus steel-ruby M2	3	20
	5x Part No. K651019	Stylus steel-ruby M2	2	20
	1x Part No. K651012	Stylus steel-ruby M2	1	10
	2x Part No. K651223	Pin spanner ø 1,2 mm		23

Styli Kit M2 Basic 1

No.	Contents	Description	ø mm	L mm
K651377		wooden box		
	1x Part No. K651012	Stylus steel-ruby M2	1	10
	1x Part No. K651014	Stylus steel-ruby M2	2	10
	1x Part No. K651019	Stylus steel-ruby M2	2	20
	1x Part No. K651016	Stylus steel-ruby M2	3	10
	1x Part No. K651021	Stylus steel-ruby M2	3	20
	1x Part No. K651022	Stylus steel-ruby M2	4	20
	1x Part No. K651031	Cylinder stylus steel M2	3	13
	1x Part No. K651062	Adaptor M2		7
	1x Part No. K651054	5-way stylus M2	2	30
	1x Part No. K651083	Disk stylus steel M2	18	7,5
	1x Part No. K651085	Disk stylus steel - ruby M2	6	10
	1x Part No. K651038	Extension steel M2		10
	1x Part No. K651039	Extension steel M2		20
	2x Part No. K651223	Pin spanner ø 1,2 mm		23

Styli Kit M2 Basic 2

No.	Contents	Description	ø mm	L mm
K651354		wooden box		
	1x Part No. K651235	Stylus tungsten carbide-ruby M2	0,5	20
	1x Part No. K651249	Stylus tungsten carbide-ruby M2	1	20
	1x Part No. K651019	stylus steel-ruby M2	2	20
	1x Part No. K651347	Stylus carbon fiber-ruby M2	4	50
	1x Part No. K651348	Stylus carbon fiber-ruby M2	5	50
	1x Part No. K651349	Stylus carbon fiber-ruby M2	6	50
	1x Part No. K651350	Stylus extension CRP M2		40
	1x Part No. K651351	Stylus extension CRP M2		50
	1x Part No. K651352	Stylus extension CRP M2		70
	1x Part No. K651353	Stylus extension CRP M2		90
	1x Part No. K651058	5-way stylus holder M2		7,5
	1x Part No. K651223	pin spanner ø 1,2 mm		

Styli Kit M2 Expansion

No.	Contents	Description	ø mm	L mm
K651378		wooden box		
	1x Part No. K651236	Stylus tungsten carbide-ruby M2	0,7	10
	1x Part No. K651248	Stylus tungsten carbide-ruby M2	1	20
	2x Part No. K651257	Stylus tungsten carbide-ruby M2	1,5	30
	1x Part No. K651233	Stylus tungsten carbide-ruby M2	0,3	10
	1x Part No. K651276	Stylus tungsten carbide-ruby M2	0,5	10
	1x Part No. K651012	Stylus steel-ruby M2	1	10
	1x Part No. K651013	Stylus steel-ruby M2	1,5	10
	1x Part No. K651014	Stylus steel-ruby M2	2	10
	1x Part No. K651015	Stylus steel-ruby M2	2,5	10
	2x Part No. K651020	Stylus steel-ruby M2	2,5	20
	1x Part No. K651032	Cylinder stylus-ruby M2	2	20
	1x Part No. K651052	4-way stylus-ruby M2	1	10
	1x Part No. K651098	Tip stylus tungsten carbide M2		10
	1x Part No. K651083	Disk stylus steel M2	18	7,5
	1x Part No. K651084	Disk stylus steel M2	25	7,5
	1x Part No. K651041	Extension steel M2		40
	2x Part No. K651223	Pin spanner ø 1,2 mm		23



Styli Kit M2 Addition



Styli Kit M2 Basic 1



Styli Kit M2 Basic 2



Styli Kit M2 Expansion

Styli Kits



Styli Kit M2
Professional



Styli Kit M2
Starter



Styli Kit M3
CRP 1



Styli Kit M3
CRP 2

Styli Kit M2 Professional

No.	Contents	Description	ø mm	L mm
K651379		wooden box		
	1x Part No. K651236	Stylus tungsten carbide-ruby M2	0,7	10
	1x Part No. K651248	Stylus tungsten carbide-ruby M2	1	20
	1x Part No. K651233	Stylus tungsten carbide-ruby M2	0,3	10
	2x Part No. K651276	Stylus tungsten carbide-ruby M2	0,5	10
	2x Part No. K651012	Stylus steel-ruby M2	1	10
	1x Part No. K651013	Stylus steel-ruby M2	1,5	10
	3x Part No. K651014	Stylus steel-ruby M2	2	10
	5x Part No. K651019	Stylus steel-ruby M2	2	20
	1xPart No. K651015	Stylus steel-ruby M2	2,5	10
	2xPart No. K651020	Stylus steel-ruby M2	2,5	20
	1x Part No. K651016	Stylus steel-ruby M2	3	10
	2x Part No. K651021	Stylus steel-ruby M2	3	20
	3x Part No. K651017	Stylus steel-ruby M2	4	10
	3x Part No. K651022	Stylus steel-ruby M2	4	20
	2x Part No. K651018	Stylus steel-ruby M2	5	10
	2x Part No. K651024	Stylus steel-ruby M2	6	10
	1x Part No. K651025	Stylus steel-ruby M2	8	11
	1x Part No. K651030	Cylinder stylus steel M2	1,5	11
	1x Part No. K651031	Cylinder stylus steel M2	3	13
	1x Part No. K651032	Cylinder stylus steel M2	2	20
	1x Part No. K651062	Adaptor M2		7
	1x Part No. K651052	4-way stylus-ruby M2	1	10
	1x Part No. K651053	5-way stylus-ruby M2	2	18
	1xPart No. K651054	5-way stylus-ruby M2	2	30
	1xPart No. K651097	Tip stylus steel M2		15
	1xPart No. K651098	Tip stylus tungsten carbide M2		10
	1x Part No. K651083	Disk stylus steel M2	18	7,5
	1x Part No. K651084	Disk stylus steel M2	25	7,5
	1xPart No. K651085	Disk stylus steel - ruby M2	6	10
	1xPart No. K651090	Hollow ball ceramic M2		11
	1xPart No. K651058	5-way stylus holder M2		7,5
	4xPart No. K651037	Extension steel M2		5
	2x Part No. K651038	Extension steel M2		10
	2x Part No. K651039	Extension steel M2		20
	2xPart No. K651040	Extension steel M2		30
	2x Part No. K651041	Extension steel M2		40
	2x Part No. K651223	Pin spanner ø 1,2 mm		23

Styli Kit M2 Starter

No.	Contents	Description	ø mm	L mm
K651376		wooden box		
	1x Part No. K651012	Stylus steel-ruby M2	1	10
	1x Part No. K651019	Stylus steel-ruby M2	2	20
	1x Part No. K651021	Stylus steel-ruby M2	3	20
	1x Part No. K651022	Stylus steel-ruby M2	4	20
	1x Part No. K651038	Extension steel M2		10
	1x Part No. K651039	Extension steel M2		20
	2x Part No. K651223	Pin spanner ø 1,2 mm		23

Styli Kit M3 CRP 1

No.	Contents	Description	ø mm	L mm
K651318		Wooden box		
	1x Part No. K651297	Stylus carbon fiber-ruby M3	3	21
	1x Part No. K651298	Stylus carbon fiber-ruby M3	4	21
	1x Part No. K651301	Stylus carbon fiber-SiNi M3	4	21
	1x Part No. K651299	Stylus carbon fiber-ruby M3	4	31
	1x Part No. K651300	Stylus carbon fiber-ruby M3	4	40
	1x Part No. K651303	Stylus carbon fiber-ruby M3	5	50
	1x Part No. K651223	pin spanner ø 1,2 mm		

Styli Kit M3 CRP 2

No.	Contents	Description	ø mm	L mm
K651319		Wooden box		
	1x Part No. K651302	Stylus carbon fiber-ruby M3	5	21
	1x Part No. K651304	Stylus carbon fiber-ruby M3	5	21
	1x Part No. K651303	Stylus carbon fiber-ruby M3	5	50
	1x Part No. K651306	Stylus carbon fiber-ruby M3	6	50
	1x Part No. K651309	Stylus carbon fiber-ruby M3	6	75
	1x Part No. K651223	Pin spanner ø 1,2 mm		

Styli Kits

Styli Kit M3 Basic

No.	Contents	Description	ø mm	L mm
K651381		Wooden box		
	1x Part No. K651170	Adaptor steel M3	4	5
	1x Part No. K651146	Stylus steel-ruby M3	1	21
	5x Part No. K651147	Stylus steel-ruby M3	2	21
	1x Part No. K651148	Stylus steel-ruby M3	3	21
	3x Part No. K651151	Stylus steel-ruby M3	4	31
	1x Part No. K651152	Stylus steel-ruby M3	5	33,5
	1x Part No. K651169	5-way stylus holder M3		13
	1x Part No. K651180	swivel steel M3	12,7	11,5
	1x Part No. K651172	disc stylus M3	63,5	33
	1x Part No. K651174	disc stylus M3		7,5
	1x Part No. K651157	extension steel M3		20
	1x Part No. K651159	extension steel M3		35
	2x Part No. K651223	Pin spanner ø 1,2 mm		23
	1x Part No. K650135	hexagonal screwdriver		

Styli Kit M3 CRP 3

No.	Contents	Description	ø mm	L mm
K651320		Wooden box		
	1x Part No. K651302	Stylus carbon fiber-ruby M3	5	21
	1x Part No. K651304	Stylus carbon fiber-ruby M3	5	21
	1x Part No. K651303	Stylus carbon fiber-ruby M3	5	50
	1x Part No. K651306	Stylus carbon fiber-ruby M3	6	75
	1x Part No. K651309	Stylus carbon fiber-ruby M3	8	100
	1x Part No. K651223	Pin spanner ø 1,2 mm		

Styli Kit M3 Starter

No.	Contents	Description	ø mm	L mm
K651380		Wooden box		
	1x Part No. K651146	Stylus steel-ruby M3	1	21
	1x Part No. K651147	Stylus steel-ruby M3	2	21
	1x Part No. K651148	Stylus steel-ruby M3	3	21
	1x Part No. K651151	Stylus steel-ruby M3	4	31
	1x Part No. K651152	Stylus steel-ruby M3	5	33,5
	1x Part No. K651157	extension steel M3		20
	1x Part No. K651159	extension steel M3		35
	2x Part No. K651223	Pin spanner ø 1,2 mm		23

Styli Kit M4

No.	Contents	Description	ø mm	L mm
K651383		Wooden box		
	1x Part No. K651184	Stylus ceramic-ruby M4	8	100
	1x Part No. K651182	Stylus ceramic-ruby M4	8	50
	1x Part No. K651216	Adaptor ceramic M4/M3	7	100
	1x Part No. K651215	Adaptor ceramic M4/M3	7	75
	1x Part No. K651214	Adaptor ceramic M4/M3	7	50
	1x Part No. K651204	extension ceramic M4	7	50
	1x Part No. K651203	extension ceramic M4	7	30
	1x Part No. K651170	Adaptor M3/M2	4	5
	1x Part No. K651208	Adaptor M4/M3	7	9
	2x Part No. K650346	Pin spanner	1,7	49
	2x Part No. K651223	Pin spanner	1,2	23
	1x Part No. K651058	5-way stylus holder M2	7	7,5
	1x Part No. K651169	5-way stylus holder M3	10	13
	1x Part No. K651206	5-way stylus holder M4	15	18
	1x Part No. K651186	Stylus steel-ruby M4	1	19,5
	4x Part No. K651187	Stylus steel-ruby M4	2	19
	1x Part No. K651188	Stylus steel-ruby M4	4	18



Styli Kit M3
Basic



Styli Kit M3
CRP 3



Styli Kit M3
Starter



Styli Kit M4

CMM Fixtures

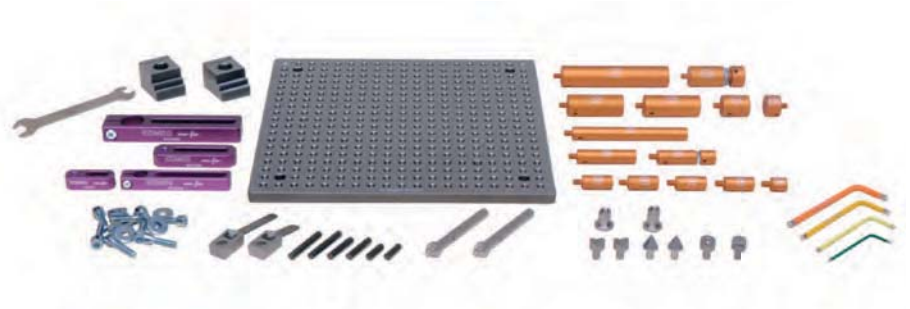
CMM Fixtures

Mitutoyo offers you the full range of CMM equipment from the machine itself to probe systems, software up to clamping systems.

The Fixture series "eco-fix" offer you:

- a quick, easy & flexible way to create fixtures,
- practice-oriented modular concept,
- time and cost-saving way to build fixtures,
- easy adaption of product changes to the fixtures,
- light-weight aluminium parts,
- strong, hardcoated and anodised parts for long life under rough conditions.

eco-fix Kit S



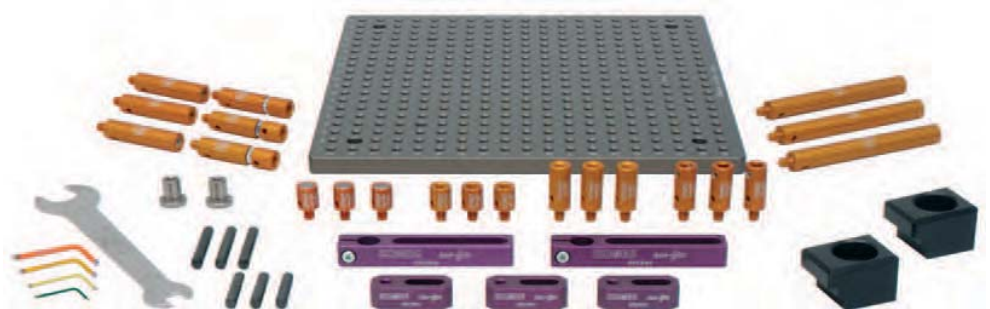
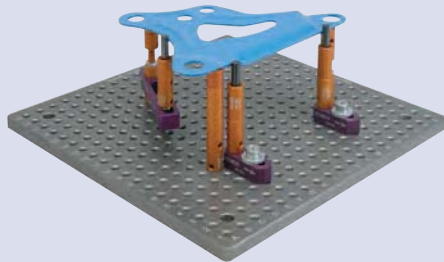
For prismatic parts

- 59 parts,
- Base plate 250x250mm,
- M6 threads in a grid of 50x50mm,
- Location pins 25-100mm,
- Stopper elements,
- Back squares,
- Cone receiver,
- V-Blocks,
- Spring clips

No.

K551048

eco-fix Kit Mag S



For magnetic parts – ideal for sheet-metal

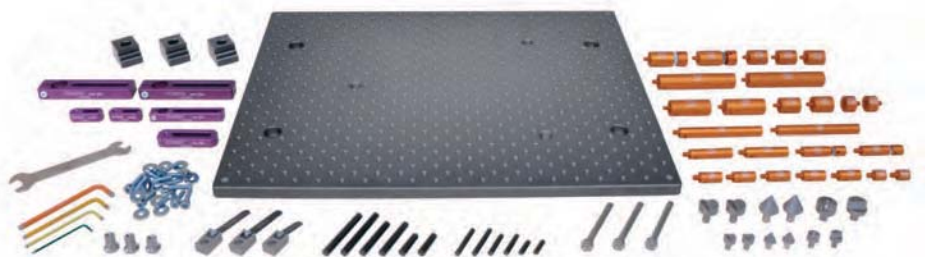
- 70 parts,
- Base plate 250x250mm,
- M6 threads in a grid of 50x50mm,
- Location pins 25-100mm,
- Magnetic receivers

No.

K551089

CMM Fixtures

eco-fix Kit L



For prismatic parts

- 98 parts,
- Base plate 500x400mm,
- M6 threats in a grid of 50x50mm,
- Location pins 25-100mm,
- Stopper elements,
- Back squares,
- Cone receiver,
- V-Blocks,
- Spring clips

No.

K551049

eco-fix Kit Mag L

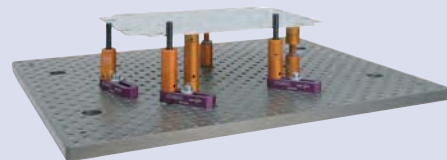
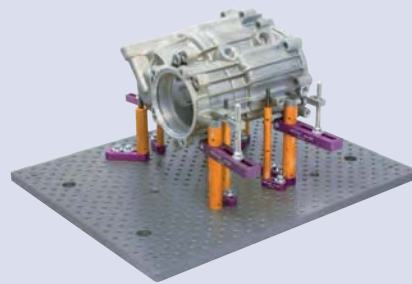


For magnetic parts – ideal for shett-metal

- 79 parts,
- Base plate 500x400mm,
- M6 threats in a grid of 50x50mm,
- Location pins 25-100mm,
- Magnetic receivers

No.

K551090



CMM Fixtures

eco-fix Kit quick-rail



The perfect system for a big variation of parts

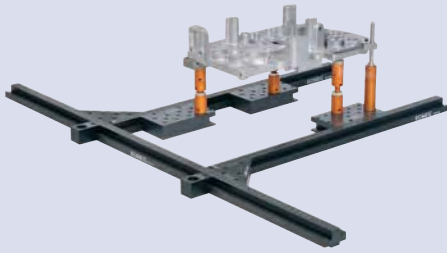
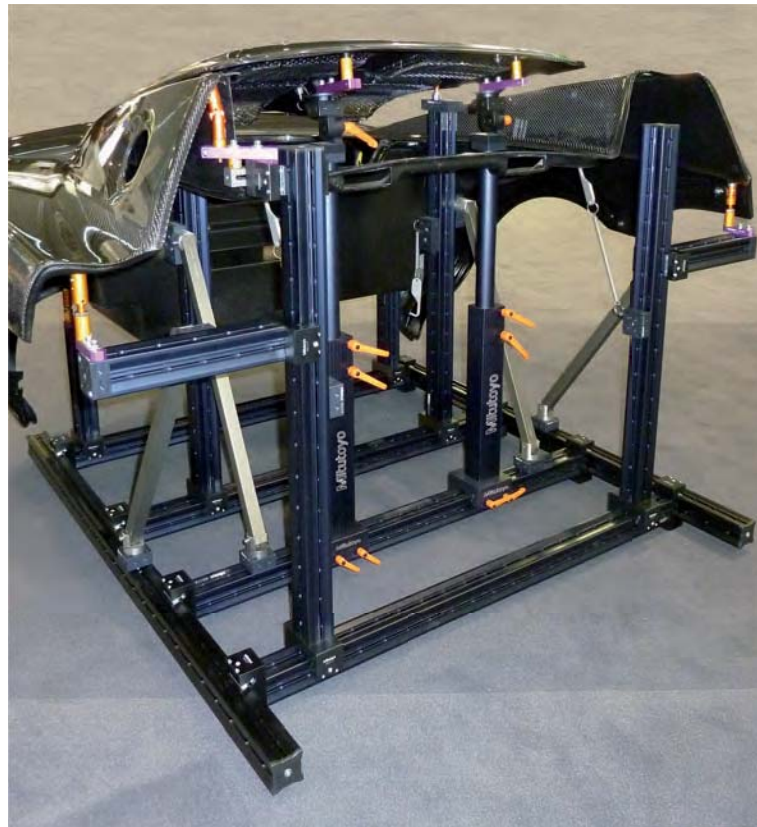
- 3 rails
- 1 rail with 800mm length, fixed to CMM
- 2 rails 500mm for flexible positioning of rail and base plates
- Location pins 25-100mm
- Stopper elements
- Back squares
- Spring clips

No.

K550914

VARI-FIX

- flexible RST profiles
- fully height-adjustable
- rotative parts allow 360° positioning
- combinable with all eco-fix parts



See how fast & easy eco-fix offers a clamping solution for your workpieces



CMM Enclosures

Protect your investment for contamination, improve reliability of measurements and reduce maintenance costs. Mitutoyo's Inspection Enclosures are designed to help keep your CMMs and instruments free of airborne contamination.

Features and benefits:

- Standard fans create positive pressure inside the enclosure to exclude airborne contaminants, increase reliability of measurements and reduce CMM maintenance costs.
- Air-conditioning option is available to add temperature control to the clean air environment.
- Enclosed volume provides greatly improved working conditions for intricate inspection operations.
- Double doors fold back enabling easy access for part loading.
- Modular Design with removable panels enables easy construction around existing machines, straightforward relocation (if required) and assists in annual CMM servicing.
- Enclosures are robustly built to withstand the demands of a busy shopfloor manufacturing facility.
- Transparent, polycarbonate, easy-clean panels pass sufficient light for normal use and are shatterproof, tough and durable.
- Clean, functional design enhances the appearance of your CMMs.

Technical details:

- Framework fabricated from extruded aluminium.
- Lower panels made from PVC - available in a variety of colours
- Upper panels in clear polycarbonate.

