

**Manual 2D Vision Measuring Systems Quick Image**  
**Page 619**



**Manual and CNC Vision Measuring Systems Quick Scope**  
**Page 621**



**3D CNC Vision Measuring Systems Quick Vision**  
**Page 625**



**3D CNC Multisensor Measuring Systems Quick Vision**  
**Page 631**



**3D CNC Measuring Systems for Micro Geometries**  
**Page 635**



**Software for Quick Vision Systems**  
**Page 638**



**Accessories for Vision Systems**  
**Page 640**



# Quick Image

## Series 361

The ultimate in simple operation with **one click measurement**.

This non-contact 2D vision measuring system brings you a new concept in 2D vision measuring instruments. It offers several unique features to improve the efficiency of your measurements, including:

- Long focal depth and wide field of view.
- Double telecentric optical system.
- 3Mega-pixel colour CCD camera.
- Four-quadrant LED ring light.

## Specifications

Measuring Mode	High-resolution mode and Normal mode
Optical system working distance	90 mm
Optical system depth of focus	<b>High-resolution mode :</b> ±0,6 mm (QI-A and B) <b>Normal mode :</b> ±11 mm (QI-A) ±1,8 mm (QI-B)
Accuracy <sup>(1)</sup>	$U_{1(x,y)} = \pm(3,5+0,02L) \mu m$ L = measured length (mm) <sup>(1)</sup> According to Mitutoyo inspection method
Optical system magnification	<b>QI-A models :</b> 0,2X <b>QI-B models :</b> 0,5X
CCD camera	3 Megapixels colour CCD camera
Illumination	- Contour LED - Coaxial LED - 4-quadrant LED ring light

## Optional accessories

No.	Description
937179T.	Footswitch
12AAJ088.	Reinforced footswitch

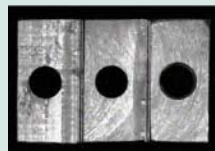


Image of a stepped block using the double telecentric objective showing the orthographic view produced.

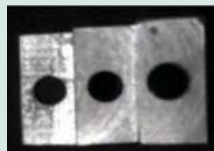


Image of the same object using a standard objective



Refer to the Quick Image brochure



QI-A2010C



QI-B4020B

## QI-A models

Model	QI-A1010C	QI-A2010C	QI-A2017C	QI-A3017C	QI-A4020C
No.	361-840A	361-841A	361-842A	361-843A	361-844A
Travelling range X-, Y-axis [mm]	100 x 100	200 x 100	200 x 170	300 x 170	400 x 200
Travelling range Z-axis [mm]	100	100	100	100	100
Stage glass size [mm]	170 x 170	242 x 140	260 x 230	360 x 230	440 x 232
Max. stage loading kg	10	10	20	20	15
Mass kg	70	74	140	148	154

## QI-B models

Model	QI-B1010C	QI-B2010C	QI-B2017C	QI-B3017C	QI-B4020C
No.	361-845A	361-846A	361-847A	361-848A	361-849A
Travelling range X-, Y-axis [mm]	100 x 100	200 x 100	200 x 170	300 x 170	400 x 200
Travelling range Z-axis [mm]	100	100	100	100	100
Stage glass size [mm]	170 x 170	242 x 140	260 x 230	360 x 230	440 x 232
Max. stage loading kg	10	10	20	20	15
Mass kg	70	74	140	148	154



Field of view with QI-A 0.2X magnification



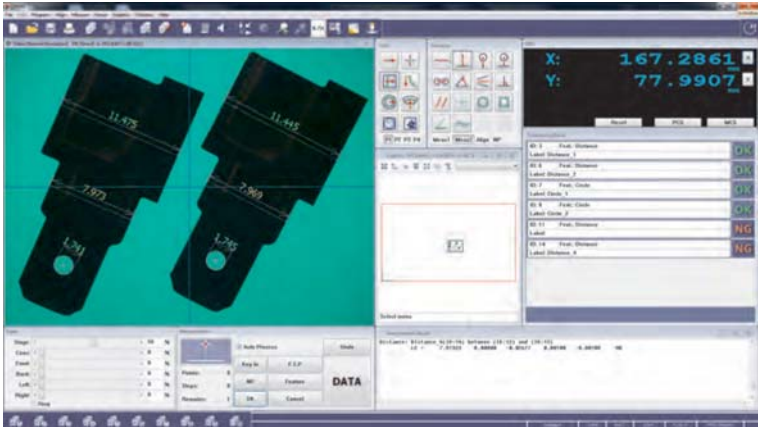
Field of view with QI-B 0.5X magnification

# Software for Quick Image Systems

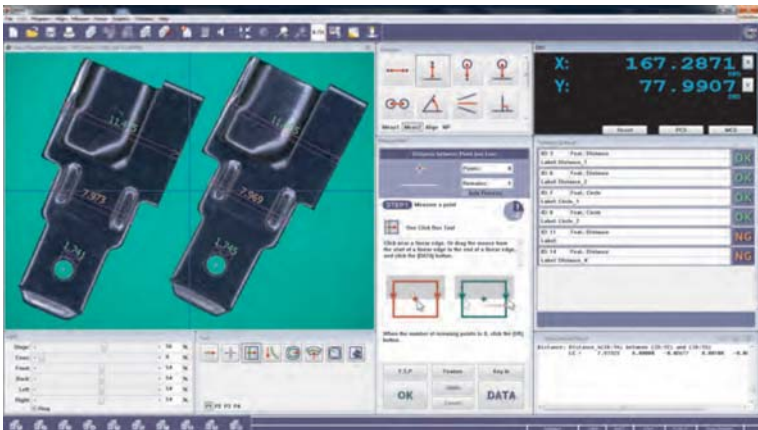
## QIPAK

- One click measurement with QUICK GO/NG decision
- Single mouse-click edge-detection tools; very easy to use.
- Template tools for comparative analysis.
- Video image capture.
- Stage navigation function gives improved measurement cycles.

No.	Type
QIPAK	Software for Quick Image Systems



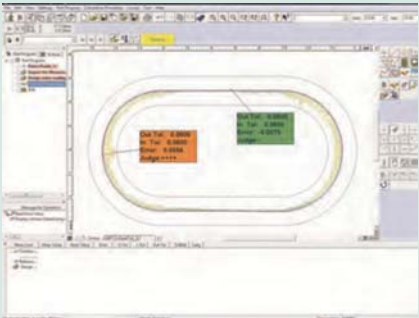
Example 1 screen layout QIPAK



Example 2 screen layout QIPAK

## Specifications

QIPAK	MEASURLINK (refer to the Measurlink page)
Additional software (optional )	QS CAD-IMPORT/EXPORT
	FORMTRACEPAK-AP <sup>(1)</sup>



(1) FORMTRACEPAK-AP

Simple and easy-to-use 2D contour analysis.  
Graphic reports (geometry or scanning) edition.  
Allows measurement by comparison.  
For more information refer to FORMTRACEPAK-AP.

# Manual Quick Scope QS-L Series

## Specifications

Accuracy <sup>(1)</sup>	$E_{1(x,y)} = (2,5 + 2L/100) \mu\text{m}$ L=measured length (mm) <sup>(1)</sup> According to Mitutoyo inspection method
Illumination	- Contour - Coaxial - Ring Light

## Optional accessories

No.	Description
937179T.	Footswitch
12AAJ088.	Reinforced footswitch
02ATN695.	Calibration chart with holder

Refer to the Optical Accessories page for Quick Scope / Quick Vision for more information on calibration charts.



Quick Scope brochure on request

## Series 359

This manual vision measuring system is an excellent surface observation system which you can use on a wide variety of workpieces.

The Quick Scope offers you the following benefits:

- 0,1  $\mu\text{m}$  resolution and 150 mm Z-axis range.
- Power zoom enabling you to change magnification change quickly and easily.
- Fine illumination capability enabling you to change lighting to match your workpiece requirements.
- A quick release system on the stage, so you can switch instantly between coarse and fine movement.
- Quick navigation function allowing you to repeat measurements quickly.
- An auto-focus function available for QS-L AFB models.



QS-L 2010 Zoom AF

### QS-L 2010 models

- Range : 200 x 100 x 150 mm

Type	QS-L Zoom	QS-L Zoom AF
No.	359-710-1D	359-703D
Model	QS-L2010ZB	QS-L2010ZAFB
Sensor type	Colour CMOS 3 Megapixels	Colour CCD
AF (motorized Z-axis)	-	Yes
Objective lens	Zoom type	Zoom type
Magnification (optical system)	0,75X -> 5,25X	0,5X -> 3,5X
Magnification on screen (56 cm / 22" inch monitor)	29X -> 202X	26X -> 180X
Z-axis measurement	Manual with software assisted contrast level	Motorized with AF
Max. stage loading kg	10	10
Mass kg	72	66

### QS-L 3017 models

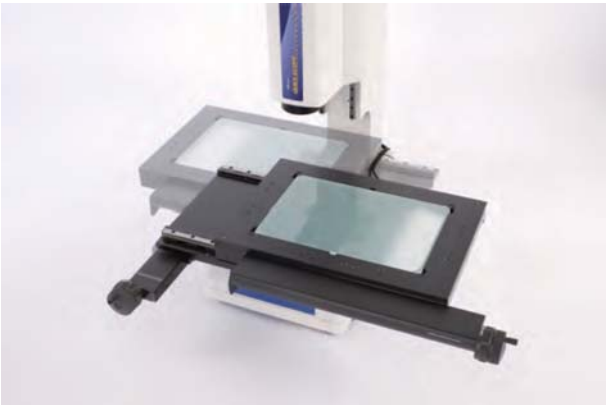
- Range : 300 x 170 x 150 mm

Type	QS-L Zoom	QS-L Zoom AF
No.	359-711-1D	359-704D
Model	QS-L3017ZB	QS-L3017ZAFB
Sensor type	Colour CMOS 3 Megapixels	Colour CCD
AF (motorized Z-axis)	-	Yes
Objective lens	Zoom type	Zoom type
Magnification (optical system)	0,75X -> 5,25X	0,5X -> 3,5X
Magnification on screen (56 cm / 22" inch monitor)	29X -> 202X	26X -> 180X
Z-axis measurement	Manual with software assisted contrast level	Motorized with AF
Max. stage loading kg	20	20
Mass kg	140	134

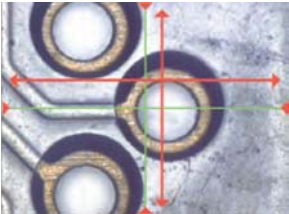
# Manual Quick Scope QS-L Series

QS-L 4020 models  
- Range : 400 x 200 x 150 mm

Type	QS-L Zoom	QS-L Zoom AF
No.	359-712-1D	359-705D
Model	QS-L4020ZB	QS-L4020ZAFB
Sensor type	Colour CMOS 3 Megapixels	Colour CCD
AF (motorized Z-axis)	-	Yes
Objective lens	Zoom type	Zoom type
Magnification (optical system)	0,75X -> 5,25X	0,5X -> 3,5X
Magnification on screen (56 cm / 22" inch monitor)	29X -> 202X	26X -> 180X
Z-axis measurement	Manual with software assisted contrast level	Motorized with AF
Max. stage loading kg	15	15
Mass kg	146	140



Stage with quick release mechanism



X:	-6.5460 mm	X	RESET
Y:	-16.7118 mm	Y	PCS
Z:	0.0005 mm	Z	MCS

Guided stage  
navigation  
for repeat  
measurements  
Step 1:  
Not in position



X:	0.0000 mm	X	RESET
Y:	0.0002 mm	Y	PCS
Z:	0.0005 mm	Z	MCS

Guided stage  
navigation  
for repeat  
measurements  
Step 2:  
In position



# CNC Quick Scope QS Series

## Specifications

Illumination	<ul style="list-style-type: none"> <li>- Contour</li> <li>- Coaxial</li> <li>- Ring Light</li> </ul>
--------------	--

## Optional accessories

No.	Description
937179T.	Footswitch
12AAJ088.	Reinforced footswitch
02ATD415.	Joystick XYZ
02APW610.	Control Box 2
02AKN020.	Calibration chart

Refer to the Optical Accessories page for Quick Scope / Quick Vision for more information on calibration charts.



Control box 2



Joystick XYZ



Quick Scope brochure on request

## Series 359

With this CNC vision measuring system you can meet a variety of measurement needs. The Quick Scope offers you the following benefits:

- You can configure the QS lighting for different measurement needs thanks to the surface, contour and fibre-optic ring light illumination.
- The powerful, Windows® based QSPAK software is easy to use and offers you a wide spectrum of measuring and analysis capabilities.
- You can make use of a range of functions including zoom, auto-focus, part program generation, one-click edge detection, graphic display, 48 different macros and a pattern matching function for several common part features.
- You can control the stage with your mouse, through the optional joystick box or the multi-function control box.



QS-250 Zoom CNC

## QS-250Z

Type	QS-250 Zoom
No.	359-508-10Y
Range (X, Y, Z-axis) with Vision Head	200 x 250 x 100 mm
Accuracy <sup>(1)</sup>	$E_{1(x,y)} = (2,5 + 0,6L/100) \mu m$ L=measured length (mm)
Resolution $\mu m$	0,1
Sensor type	Colour CCD
Objective lens	Zoom type
Magnification (optical system)	0,5X -> 3,5X
Magnification on screen (56cm / 22" inch monitor)	26X -> 180X
AF (motorized Z-axis)	Yes
Z-axis measurement	Motorized with AF
Stage glass size [mm]	269 x 311 mm
Max. stage loading kg	10
Mass kg	76

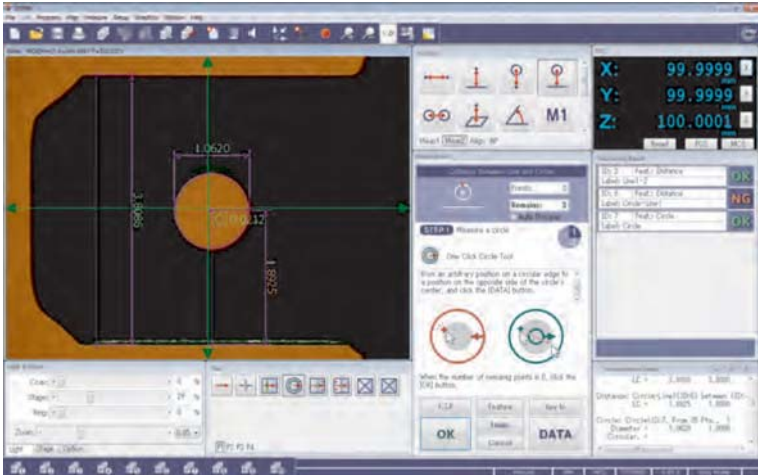
<sup>(1)</sup>According to Mitutoyo inspection method

# Software for Quick Scope Systems

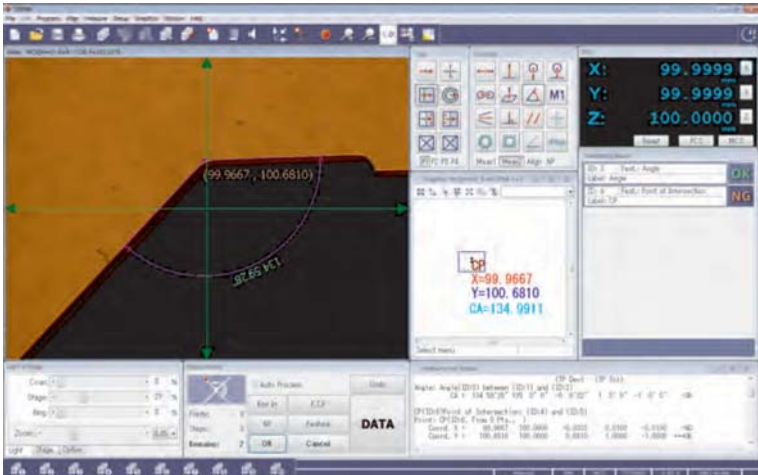
## QSPAK

- Easy to use, single mouse-click edge-detection tools
- Template tools for comparative analysis.
- Video image capture.
- Stage navigation function for CNC machines giving you improved measurement cycles.

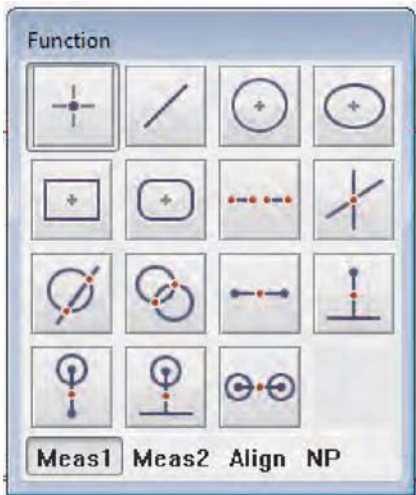
No.	Type
QSPAK	Software for Quick Scope systems



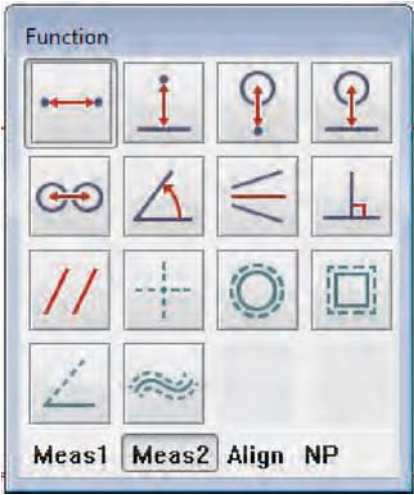
QSPAK Layout: Easy mode



QSPAK Layout: Pro mode

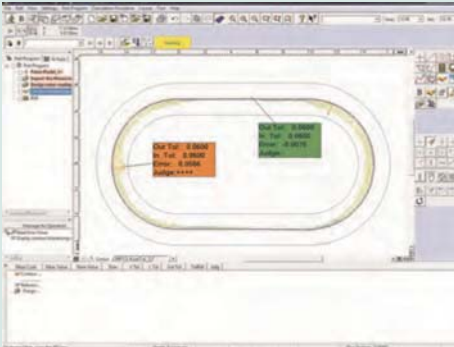


Measurement item commands



## Specifications

QIPAK	MEASURLINK
Additional software (optional)	(refer to the Measurlink page)
	QS CAD-IMPORT/EXPORT
	FORMTRACEPAK-AP <sup>(1)</sup>
	EASYPAG
	(only for QS CNC)



(1) FORMTRACEPAK-AP

Simple and easy-to-use 2D contour analysis.  
Graphic reports (geometry or scanning) edition.  
Allows measurement by comparison.  
For more information refer to FORMTRACEPAK-AP

# Quick Vision ELF Series

## Series 363

You will find this CNC Vision Measuring System ideal for installations anywhere that you have limited space, due to its controller-integrated compact design.

The Quick Vision ELF offers you the following benefits:

- On a small footprint, this series offers you full functionality including programmable ringlight (PRL) and power turret.
- The pattern focus enables you to make measurements in the Z-axis with the Auto Focus tools on low contrast, transparent or mirrored surfaces.
- Accuracy specifications conforming to ISO 10360-7 standard (on request)
- Manual temperature compensation as standard feature.

### Optional PFF Function (Points From Focus)

- PFF enhances the functionality of standard QV models with 3D topography measurements
- No additional sensor necessary
- High scanning range in Z axis from 2,7 mm upto 40,6 mm depending on the objective lens in use and in wide range mode

### Specifications

Range (X, Y, Z-axis) with Vision Head	250 x 200 x 200 mm
Resolution	0,1 µm
Accuracy <sup>(1)</sup>	$E_{1(x,y)} = (2+0,3L/100) \mu\text{m}$ $E_{1(z)} = (3+0,5L/100) \mu\text{m}$ $L = \text{measured length (mm)}$ <sup>(1)</sup> According to Mitutoyo inspection method
Illumination (White LED)	- Contour - Coaxial - 4-quadrant PRL (PRL : see Programmable Ring Light on this page)
Magnification change system	Programmable Power Turret (PPT) 1X ; 2X ; 6X
Stage glass size	311 x 269 mm
Max. stage loading	15 kg
Mass	205 kg

### Additional Specifications

Factory option	- Series 364 (TP) Touch Probe option
Additional objective lenses	Refer to the Optical Accessories page for Quick Scope / Quick Vision

### Optional accessories

No.	Description
02ATP623.	Machine stand for QV-ELF
02ATN695.	Calibration chart with holder

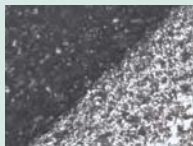
Refer to the Optical Accessories page for Quick Scope / Quick Vision for more information on calibration charts.



1X tube lens and  
2.5X objective  
Field of View :  
2.5 x 1.88 mm



2X tube lens and  
2.5X objective  
Field of View :  
1.25 x 0.94 mm



6X tube lens and 2.5X objective  
Field of view: 0.41 x 0.31 mm

### Programmable power turret (PPT) - 1X ; 2X ; 6X

The three tube lens selection provides three magnification levels while using the same objective lens. Replacement lenses allow a wide range of magnifications to support a variety of measurements.



Quick Vision brochure on request



Scan QR Code with your mobile device and watch our product videos on YouTube



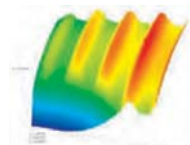
Quick Vision ELF 202 (QV-E202P1L)



Touch Probe option



Workpiece to be measured with PFF

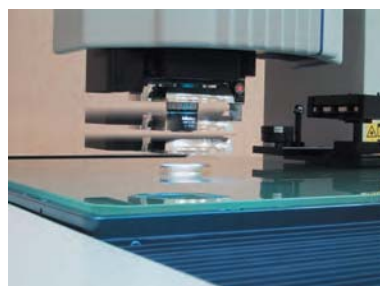


3D Analysis of PFF measurement



2D Analysis of PFF measurement

Type	Quick Vision ELF 202 PRO
No.	363-107SY
Model	QV-E202P1L-D



### PRL = Programmable Ring Light

Fine control of angle and direction provides illumination for optimal measurement. You can set the angle in the range from 30° to 80°. This type of illumination is effective for enhancing the edge of inclined surfaces or very small steps. Illumination can be controlled independently from back or front, right or left. Measurement with edge enhancement is possible if you form a shadow by illuminating from only one direction.



# Quick Vision APEX / HYPER Series

## Series 363

This CNC Vision Measuring System is a floor-standing vision measuring machine which offers you the following benefits:

- Programmable LED stage and coaxial lighting.
- Programmable 4-quadrant LED ring light.
- Pattern focus function.
- Accuracy specifications conforming to ISO 10360-7 standard (on request).
- Temperature compensation as standard feature.

### Optional PFF Function (Points From Focus)

- PFF enhances the functionality of standard QV models with 3D topography measurements
- No additional sensor necessary
- High scanning range in Z axis from 2,7 mm up to 40,6 mm depending on the objective lens in use and in wide range mode

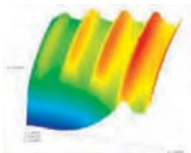


Touch Probe option

Quick Vision Apex 302 PRO



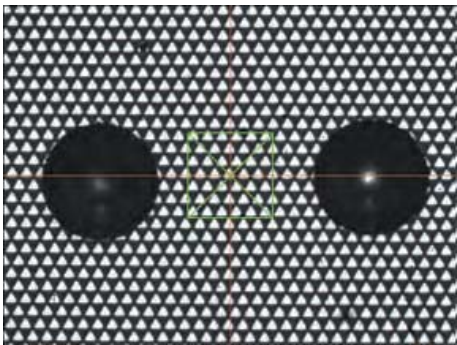
Workpiece to be measured with PFF



3D Analysis of PFF measurement



2D Analysis of PFF measurement



Auto Focus Tool : type Pattern Focus  
(tool for focusing on difficult surfaces such as mirrors, polished surface clear glass).

Specifications	
Illumination	<b>White LED:</b> - Contour - Coaxial - 4 quadrant PRL  PRL: Refer to QV-ELF page for details)
Magnification change system	Programmable Power Turret (PPT) 1X ; 2X ; 6X
Sensor Type	<b>QV PRO Models:</b> High sensitivity CCD B&W camera  <b>QV PRO3 Models:</b> High sensitivity CCD Colour camera
Factory option	<b>For QV APEX and QV HYPER:</b> - TAF Tracking Auto Focus - Series 364 (TP) Touch Probe option  Refer to the Quick Vision Accessories page for details  <b>For QV APEX:</b> - PRO 3 models Colour CCD camera
Additional objective lenses	Refer to the Optical Accessories page for Quick Scope / Quick Vision

### Optional accessories

No.	Description
<b>Calibration charts</b>	
02ATN695.	Calibration chart with holder
<b>Machine stands</b>	
02ATN332.	Machine Stand for QV-302
02ATN333.	Machine Stand for QV-404
02ATN334.	Machine Stand for QV-606

Refer to the Optical Accessories page for Quick Scope / Quick Vision for more information on calibration charts.



Refer to the Quick Vision brochure

# Quick Vision APEX / HYPER Series

## Series 363

Quick Vision 302  
Range : 300 x 200 x 200 mm

Type	Quick Vision APEX 302 PRO	Quick Vision APEX 302 PRO3	Quick Vision HYPER 302 PRO
No.	363-170SY	363-171Y	363-173SY
Model	QV-X302P1L-D	QV-X302P3L-D	QV-H302P1L-D
Resolution $\mu\text{m}$	0,1	0,1	0,02
Accuracy <sup>(1)</sup>	$E_{1(x,y)} = (1,5+0,3L/100)$ $E_{1(z)} = (1,5+0,4L/100)$ $E_{2(xy)} = (2+0,4L/100)$	$E_{1(x,y)} = (1,5+0,3L/100)$ $E_{1(z)} = (1,5+0,4L/100)$ $E_{2(xy)} = (2+0,4L/100)$	$E_{1(x,y)} = (0,8+0,2L/100)$ $E_{1(z)} = (1,5+0,2L/100)$ $E_{2(xy)} = (1,4+0,3L/100)$
Max. stage loading kg	20	20	15
Mass kg	360	360	360

<sup>(1)</sup> According to Mitutoyo inspection method L = measured length (mm)

Quick Vision 404  
Range : 400 x 400 x 250 mm

Type	Quick Vision APEX 404 PRO	Quick Vision APEX 404 PRO3	Quick Vision HYPER 404 PRO
No.	363-180SY	363-181Y	363-183SY
Model	QV-X404P1L-D	QV-X404P3L-D	QV-H404P1L-D
Resolution $\mu\text{m}$	0,1	0,1	0,02
Accuracy <sup>(1)</sup>	$E_{1(x,y)} = (1,5+0,3L/100)$ $E_{1(z)} = (1,5+0,4L/100)$ $E_{2(xy)} = (2+0,4L/100)$	$E_{1(x,y)} = (1,5+0,3L/100)$ $E_{1(z)} = (1,5+0,4L/100)$ $E_{2(xy)} = (2+0,4L/100)$	$E_{1(x,y)} = (0,8+0,2L/100)$ $E_{1(z)} = (1,5+0,2L/100)$ $E_{2(xy)} = (1,4+0,3L/100)$
Max. stage loading kg	40	40	30
Mass kg	579	579	579

<sup>(1)</sup> According to Mitutoyo inspection method L = measured length (mm)

Quick Vision 606  
Range : 600 x 650 x 250 mm

Type	Quick Vision APEX 606 PRO	Quick Vision APEX 606 PRO3	Quick Vision HYPER 606 PRO
No.	363-190SY	363-191Y	363-193SY
Model	QV-X606P1L-D	QV-X606P3L-D	QV-H606P1L-D
Resolution $\mu\text{m}$	0,1	0,1	0,02
Accuracy <sup>(1)</sup>	$E_{1(x,y)} = (1,5+0,3L/100)$ $E_{1(z)} = (1,5+0,4L/100)$ $E_{2(xy)} = (2+0,4L/100)$	$E_{1(x,y)} = (1,5+0,3L/100)$ $E_{1(z)} = (1,5+0,4L/100)$ $E_{2(xy)} = (2+0,4L/100)$	$E_{1(x,y)} = (0,8+0,2L/100)$ $E_{1(z)} = (1,5+0,2L/100)$ $E_{2(xy)} = (1,4+0,3L/100)$
Max. stage loading kg	50	50	40
Mass kg	1450	1450	1450

<sup>(1)</sup> According to Mitutoyo inspection method L = measured length (mm)



Quick Vision Apex 606 PRO

  
Quick Vision brochure on request



Scan QR Code with your mobile device and watch our product videos on YouTube

# Quick Vision STREAM PLUS Series

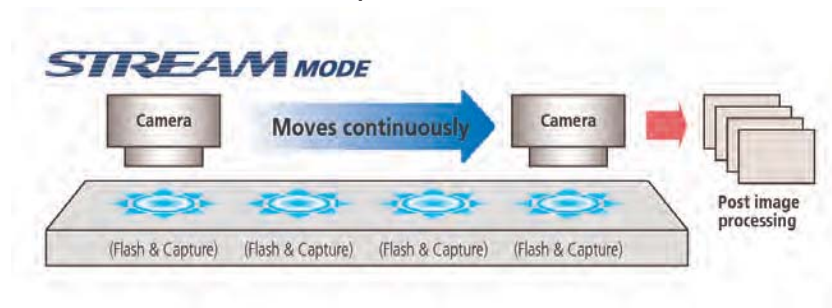
## Series 363

This CNC vision measuring system enables you to carry out measurements at lightning speed. The Quick Vision Stream Plus offers you the following benefits:

- Non-stop measurement in your production environment thanks to high-tech lighting options.
- Combining quadricolour and stroboscopic lighting, it captures and processes all the workpiece images you need to make accurate and rapid measurements.



Quick Vision STREAM PLUS 606 PRO



STREAM Mode

- The measurement mode of non-stop vision measuring is referred to as the STREAM mode.

Type	Quick Vision STREAM PLUS 302	Quick Vision STREAM PLUS 404	Quick Vision STREAM PLUS 606
No.	363-172Y	363-182Y	363-192Y
Model	QV-X302P1S-D	QV-X404P1S-D	QV-X606P1S-D
Range (X, Y, Z-axis) with Vision Head	300 x 200 x 200 mm	400 x 400 x 250 mm	600 x 650 x 250 mm
Max. measuring speed	40 mm/s	40 mm/s	40 mm/s
Max. drive speed (X-, Y-, Z-axis)	300 mm/s	XY : 400 mm/s Z : 300 mm/s	XY : 400 mm/s Z : 300 mm/s

Other features are identical to QV-APEX

## Specifications

Resolution	0,1 µm
CCD camera	High-sensitivity B&W, progressive scan CCD
Accuracy <sup>(1)</sup>	$E_{1(x,y)} = (1,5+0,3L/100) \mu\text{m}$ $E_{1(z)} = (1,5+0,4L/100) \mu\text{m}$ $E_{2(xy)} = (2+0,4L/100) \mu\text{m}$ L = measured length (mm) <sup>(1)</sup> According to Mitutoyo inspection method
Illumination	Hi-intensity LED (stroboscopic and continuous illumination, switchable) : - Contour (Blue) - Coaxial (RGB & W) - 4-quadrant PRL (RGB & W) (PRL : refer to the QV-ELF page)
	Pattern focus function (Pattern focus : refer to the QV-ACCEL page)

## Additional Specifications

Factory option	- <b>Tracking Auto Focus (TAF)</b> (Refer to Quick Vision Accessories for details)
Additional objective lenses	Refer to the Optical Accessories page for Quick Scope / Quick Vision

## Optional accessories

No.	Description
<b>Calibration charts</b>	
02ATN695.	Calibration chart with holder
<b>Machine stands</b>	
02ATN332.	Machine Stand for QV-302
02ATN333.	Machine Stand for QV-404
02ATN334.	Machine Stand for QV-606

Refer to the Optical Accessories page for Quick Scope / Quick Vision for more information on calibration charts.



Non-stop vision measurement



Refer to the Quick Vision brochure



Scan QR Code with your mobile device and watch our product videos on YouTube

# Quick Vision ACCEL Series

## Series 363

This CNC vision measuring system is a moving-bridge type structure.

The Quick Vision ACCEL offers you the following benefits:

- The moving-bridge type structure results in a fixed stage. This means that the workpiece fixture can be designed more simply, which in turn means you need significantly fewer man-hours for fixture fabrication and inspection.
- The system comes complete with a machine stand.
- 3D topography measurements are possible with the optional PFF functionality.
- Tracking Auto Focus (TAF) and Touch Probe (TP) as factory options.



Touch Probe option



Quick Vision ACCEL 1212 PRO3

### Specifications

Resolution	0,1 µm
High-sensitivity CCD camera	<b>PRO models</b> : B&W <b>PRO3 models</b> : Colour
Contour illumination	<b>PRO models</b> : White LED <b>PRO3 models</b> : White LED
Coaxial illumination	<b>PRO models</b> : White LED <b>PRO3 models</b> : White LED
4-quadrant PRL <sup>(1)</sup> illumination	<b>PRO models</b> : White LED <b>PRO3 models</b> : White LED (1) PRL : refer to the QV-ELF page
Pattern Focus <sup>(2)</sup>	<b>(2) See image below</b>
Magnification change system	Programmable Power Turret (PPT) 1X ; 2X ; 6X

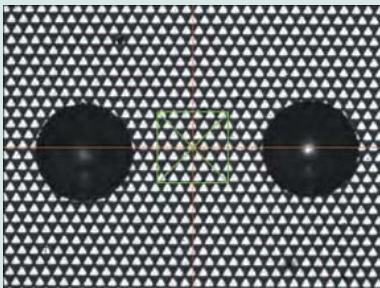
### Additional Specifications

Additional objective lenses	Refer to the Optical Accessories page for Quick Scope / Quick Vision
Factory option	- <b>Touch Probe (TP)</b> Series 364 - <b>Tracking Auto Focus (TAF)</b> Refer to Quick Vision accessories

### Optional accessories

No.	Description
02ATN695.	Calibration chart with holder

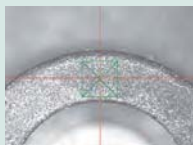
Refer to the Optical Accessories page for Quick Scope / Quick Vision for more information on calibration charts.



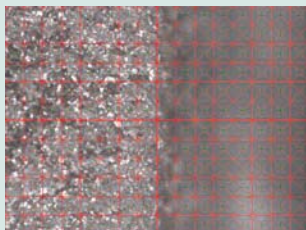
Auto Focus Tool : type Pattern Focus (focusing for option difficult surfaces such as mirrors, polished surface clear glass).



Auto Focus Tool : Edge Focus type



Auto Focus Tool : Surface Focus type



Auto Focus Tool : Multi-point Auto Focus type



Quick Vision brochure on request

Model PRO	QV ACCEL 808 PRO	QV ACCEL 1010 PRO	QV ACCEL 1212 PRO	QV ACCEL 1517 PRO3
No.	363-315Y	363-335Y	363-355Y	363-375Y
Model PRO3	QV ACCEL 808 PRO3	QV ACCEL 1010 PRO3	QV ACCEL 1212 PRO3	QV ACCEL 1517 PRO3
No.	363-316Y	363-336Y	363-356Y	363-376Y
Range (X, Y, Z-axis) with Vision Head	800 x 800 x 150 mm	1000 x 1000 x 150 mm	1250 x 1250 x 100 mm	1500 x 1750 x 100 mm
Max. drive speed X, Y-axis mm/s	400	400	300	300
Accuracy E1(x,y) <sup>(3)</sup>	(1,5+0,3L/100) µm	(1,5+0,3L/100) µm	(2,2+0,3L/100) µm	(2,2+ 0,3L/100) µm
Stage glass size [mm]	883 x 958	1186 x 1186 mm	1440 x 1440 mm	1714 x 1968 mm
Max. stage loading kg	10	30	30	30
Mass kg	2050	2950	3600	4500

<sup>(3)</sup> According to Mitutoyo inspection method L = measured length (mm)  
For a description of PRO and PRO3 models, refer to QV-APEX



# Quick Vision ULTRA

## Series 363

- This CNC vision measuring system gives you ultra-high accuracy. The Quick Vision ULTRA offers you the following benefits:
- Axial translation straightness is maximised through the use of a precision air-bearing linear guide system.
  - High resolution (0,01 µm) scales, manufactured at an ultra-precision facility located 11 m underground, are used on all axes.
  - The scales are made from glass that has a virtually zero thermal expansion coefficient, so your measuring accuracy has minimal variation in changing temperatures.
  - The base structure was designed using Finite Element Method analysis; this gives you the optimal stiffness/weight ratio combined with excellent geometrical stability, in terms of axial straightness/ perpendicularity, with changing temperatures.
  - Accuracy specification conforming to ISO 10360-7 are available (on request).
  - 3D topography measurements are possible with the optional PFF functionality.



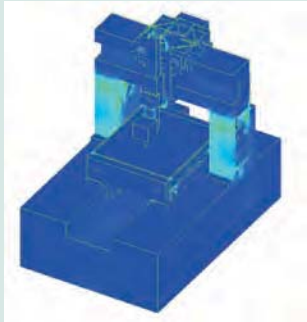
Quick Vision ULTRA 404 PRO

Type	Quick Vision ULTRA 404 PRO
No.	363-518SY
Model	QV-U404P1N-D
Range (X, Y, Z-axis) with Vision Head	400 x 400 x 200 mm
Accuracy <sup>(1)</sup>	$E_{1(x,y)} = (0,25+0,1L/100) \mu m$ $E_{1(z)} = (1,5+0,2L/100) \mu m$ $E_{2(xy)} = (0,5+0,2L/100) \mu m$ L = measured length (mm)
Resolution µm	0,01
Magnification change system	Programmable Power Turret (PPT) 1X ; 2X ; 6X
Dimensions (W x D x H) <sup>(2)</sup> mm	1172 x 1735 x 1910
CCD camera	High-sensitivity CCD B&W
Max. drive speed (X-, Y-, Z-axis)	150 mm/s
Illumination	Halogen (Cold light via optical fibre) - Contour - Coaxial - 4-quadrant PRL (PRL : refer to the QV-ELF page)
Max stage loading [kg]	40
Stage glass size [mm]	493 x 551
Mass <sup>(2)</sup> kg	2150

<sup>(1)</sup> According to Mitutoyo inspection method.  
<sup>(2)</sup> Including machine stand

## Additional Specifications

Factory option	- Tracking Auto Focus (TAF) Refer to Quick Vision Accessories page
Additional objective lenses	Refer to Objective page for Quick Scope / Quick Vision



By using FEM (Finite Element Method) analysis of the base design, the placement of stiffening ribs and beams has been determined for the Ultra Quick Vision to provide optimal structural rigidity.



Ultra-precision scale manufacturing facility 11 metres underground



Ultra-high accuracy crystallized glass scale with virtually zero thermal expansion. The Ultra Quick Vision is equipped with a crystallized glass scale having a resolution of 0.01 µm and linear expansion coefficient of  $0.08 \times 10^{-6}/K$ . This virtually zero thermal expansion means the Ultra Quick Vision can minimise accuracy fluctuation due to thermal changes.

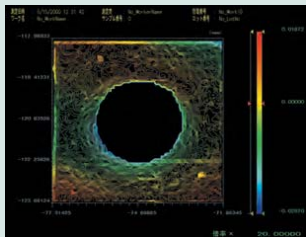


Quick Vision brochure on request

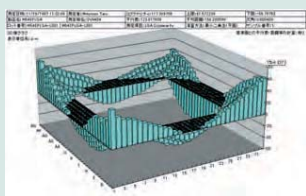
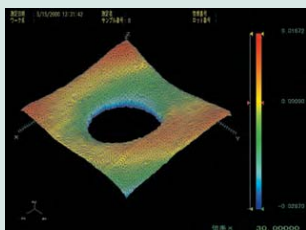
## Specifications

Factory option

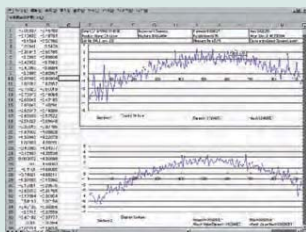
- Colour CCD camera  
QV PRO 3 models



Curved-form analysis (MSHAPE-QV)  
2D / 3D contour lines display  
2D / 3D unfiltered profile display  
Shadowgraph display  
Curved plane analysis  
Unfiltered profile analysis, etc.



Data processing (QV Graph)  
3D bar chart display  
3D surface chart display  
2D continuous cross-section graph display



Quick Vision brochure on request

# Quick Vision HYBRID Type 1 Series

## Series 365 - CNC Vision Measuring System

This CNC vision measuring system is a multi-sensor machine.

The Quick Vision HYBRID Type 1 offers you the following benefits:

- It allows you to make vision measurements with a CCD camera, and carry out high-speed scanning, by applying a vision measurement unit in parallel with a non-contact displacement sensor.
- The focusing point method minimises the difference in the measuring face reflectance and gives you high measurement reproducibility.
- The double pinhole method (less directivity) is employed as the measurement principle.



Quick Vision H1 APEX 404 PRO



Quick Vision Hybrid system - Type 1

The scanning laser system for Quick Vision HYBRID adds 3D profiling capability. The laser probe with 0.01  $\mu\text{m}$  resolution continuously scans the workpiece surface and gathers coordinate data, enabling the evaluation of surface contours, peak heights, etc. The double pinhole detection method is adopted to prevent measurement being affected by the colour, reflection factor, etc., of the surface.

Available for Quick Vision APEX ; Quick Vision STREAM PLUS ; Quick Vision HYPER and Quick Vision ACCEL models.

# Quick Vision HYBRID Type 1 Series

## Series 365 - CNC Vision Measuring System

### Quick Vision ACCEL-based

Accuracy when using vision sensor: Same as standard Quick Vision ACCEL  
Accuracy  $E_{1(z)}$  when using non-contact displacement sensor: QV ACCEL 808 and 1010 (2,5+0,4L/100)  $\mu\text{m}$   
QV ACCEL 1212 and 1517 (3,5+0,5L/100)  $\mu\text{m}$  <sup>(1)</sup>

Type	Quick Vision H1 ACCEL 808	Quick Vision H1 ACCEL 1010	Quick Vision H1 ACCEL 1212	Quick Vision H1 ACCEL 1517
No.	365-315Y	365-335Y	365-355Y	365-375Y
Model	QVH1-A808P1L-C	QVH1-A1010P1L-C	QVH1-A1212P1L-C	QVH1-A1517P1L-C
Range - Vision	800 x 800 x 150 mm	1000 x 1000 x 150 mm	1250 x 1250 x 100 mm	1500 x 1750 x 100 mm
Range - Non-contact Displacement Sensor (Type 1)	680 x 800 x 150 mm	880 x 1000 x 150 mm	1130 x 1250 x 100 mm	1380 x 1750 x 100 mm

### Quick Vision APEX-based

Accuracy when using vision sensor: Same as standard Quick Vision APEX  
Accuracy  $E_{1(z)}$  when using non-contact displacement sensor: (1,5+0,4L/100)  $\mu\text{m}$  <sup>(1)</sup>

Type	Quick Vision H1 APEX 302	Quick Vision H1 APEX 404	Quick Vision H1 APEX 606
No.	365-170SY	365-180SY	365-190SY
Model	QVH1-X302P1L-D	QVH1-X404P1L-D	QVH1-X606P1L-D
Range - Vision	300 x 200 x 200 mm	400 x 400 x 250 mm	600 x 650 x 250 mm
Range - Non-contact Displacement Sensor (Type 1)	180 x 200 x 200 mm	280 x 400 x 250 mm	480 x 650 x 250 mm

### Quick Vision HYPER-based

Accuracy when using vision sensor: Same as standard Quick Vision HYPER  
Accuracy  $E_{1(z)}$  when using non-contact displacement sensor: (1,5+0,2L/100)  $\mu\text{m}$  <sup>(1)</sup>

Type	Quick Vision H1 HYPER 302	Quick Vision H1 HYPER 404	Quick Vision H1 HYPER 606
No.	365-173SY	365-183SY	365-193Y
Model	QVH1-H302P1L-D	QVH1-H404P1L-D	QVH1-H606P1L-D
Range - Vision	300 x 200 x 200 mm	400 x 400 x 250 mm	600 x 650 x 250 mm
Range - Non-contact Displacement Sensor (Type 1)	180 x 200 x 200 mm	280 x 400 x 250 mm	480 x 650 x 250 mm

### Quick Vision STREAM PLUS-based

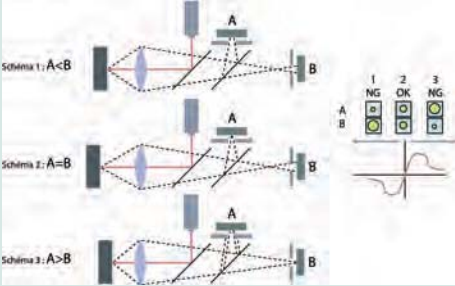
Accuracy when using vision sensor: Same as standard Quick Vision STREAM PLUS  
Accuracy  $E_{1(z)}$  when using non-contact displacement sensor: (1,5+0,4L/100)  $\mu\text{m}$  <sup>(1)</sup>

Type	Quick Vision H1 STREAM PLUS 302	Quick Vision H1 STREAM PLUS 404	Quick Vision H1 STREAM PLUS 606
No.	365-172Y	365-182Y	365-192Y
Model	QVH1-X302P1S-D	QVH1-X404P1S-D	QVH1-X606P1S-D
Range - Vision	300 x 200 x 200 mm	400 x 400 x 250 mm	600 x 650 x 250 mm
Range - Non-contact Displacement Sensor (Type 1)	180 x 200 x 200 mm	280 x 400 x 250 mm	480 x 650 x 250 mm

Other features similar to those of corresponding QV series

<sup>(1)</sup> According to Mitutoyo inspection method

L = measured length (mm)

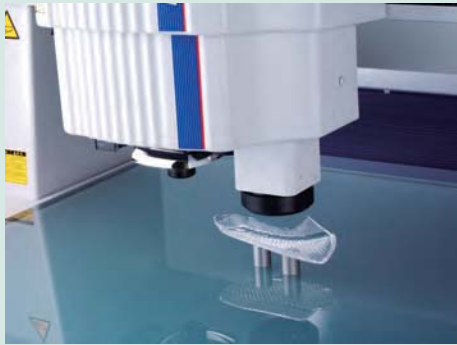


QV-Hybrid Type 1 : Laser principle, double pinhole method

# Quick Vision HYBRID Type 4 Series

## Series 365 - CNC Vision Measuring System

- The Quick Vision HYBRID type 4 is a multi-sensor machine that enables the topography of the surface and the thickness of transparent objects to be measured.
- The measuring range of the scanning sensor is 0-1200  $\mu\text{m}$ .
- Effective even for high inclination angles both of mirrored surfaces and diffuse surfaces. Maximum measurable inclination angle :  $\pm 80^\circ$  (diffuse surface).
- Achieves high resolution and high accuracy height measurement by the wavelength confocal method using axial chromatic aberration.
- The automatic light intensity control provides reliable measurements even when reflectance of the measured surface changes during measurement.



Hybrid Type 4 system

The Quick Vision Hybrid Type 4 is a machine which allows vision measurement with a CCD camera and high-speed scanning with a non-contact displacement sensor.

The Hybrid Type 4 CPS sensor is available for Quick Vision Apex/Hyper and Quick Vision Stream Plus models.



Quick Vision H4 HYPER 606 PRO

### 1: QV APEX-based

Accuracy when using vision sensor: Same as standard Quick Vision APEX

Accuracy  $E_{1(z)}$  when using non-contact displacement sensor:  $(1,5+0,4L/100) \mu\text{m}^{(1)}$

Type	Quick Vision H4 APEX 302	Quick Vision H4 APEX 404	Quick Vision H4 APEX 606
No.	365-413SY	365-433SY	365-453SY
Model	QVH4A-X302P1L-D	QVH4A-X404P1L-D	QVH4A-X606P1L-D
Range (X, Y, Z-axis) with Vision Head	300 x 200 x 200 mm	400 x 400 x 250 mm	600 x 650 x 250 mm
Range - Non-contact Displacement Sensor (Type 4)	176 x 200 x 200 mm	276 x 400 x 250 mm	476 x 650 x 250 mm

### 2: QV STREAM PLUS-based

Accuracy when using vision sensor: Same as standard Quick Vision STREAM PLUS

Accuracy  $E_{1(z)}$  when using non-contact displacement sensor:  $(1,5+0,4L/100) \mu\text{m}^{(1)}$

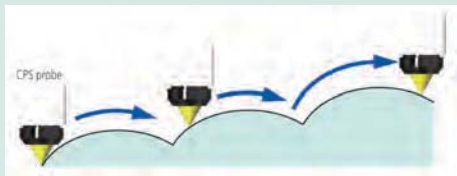
Type	Quick Vision H4 STREAM PLUS 302	Quick Vision H4 STREAM PLUS 404	Quick Vision H4 STREAM PLUS 606
No.	365-415Y	365-435Y	365-455Y
Model	QVH4A-X302P1S-D	QVH4A-X404P1S-D	QVH4A-X606P1S-D
Range (X, Y, Z-axis) with Vision Head	300 x 200 x 200 mm	400 x 400 x 250 mm	600 x 650 x 250 mm
Range - Non-contact Displacement Sensor (Type 4)	176 x 200 x 200 mm	276 x 400 x 250 mm	476 x 650 x 250 mm

### 3: QV HYPER-based

Accuracy when using vision sensor: Same as standard Quick Vision HYPER

Accuracy  $E_{1(z)}$  when using non-contact displacement sensor:  $(1,5+0,2L/100) \mu\text{m}^{(1)}$

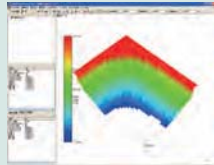
Type	Quick Vision H4 HYPER 302	Quick Vision H4 HYPER 404	Quick Vision H4 HYPER 606
No.	365-416SY	365-436SY	365-456SY
Model	QVH4A-H302P1L-D	QVH4A-H404P1L-D	QVH4A-H606P1L-D
Range (X, Y, Z-axis) with Vision Head	300 x 200 x 200 mm	400 x 400 x 250 mm	600 x 650 x 250 mm
Range - Non-contact Displacement Sensor (Type 4)	176 x 200 x 200 mm	276 x 400 x 250 mm	476 x 650 x 250 mm



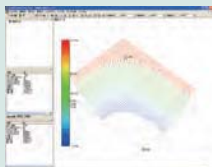
Scanning measurement with automatic movement of the Z-axis



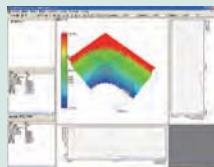
Form analysis of plastic molded parts having a slope.



Solid colour display



Shaped display



Extraction of arbitrary section



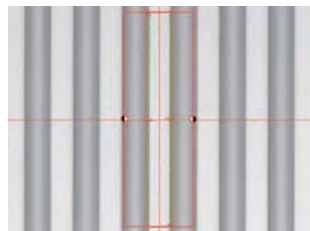
# Quick Vision White Light Interferometer

## Series 363

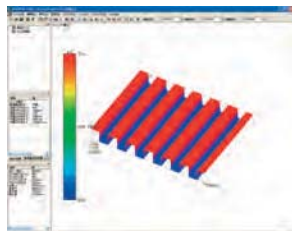
- Combined non contact measurements with vision system and White Light Interferometer (WLI)
- Easy alignment and positioning with vision sensor
- Full QVPAK functionality with Vision system
- Enhanced functionality with WLI-system for high resolution topography evaluation such as surface roughness analysis



Quick Vision WLI 404 PRO



Video image of part



3D Analysis of measured part



2D Analysis of measured part

Specifications when using vision sensor are same as Quick Vision HYPER

Type	Hyper Quick Vision WLI 302	Hyper Quick Vision WLI 404	Hyper Quick Vision WLI 606
No.	363-713SY	363-714SY	363-715SY
Model	QVW-H302P1L-D	QVW-H404P1L-D	QVW-H606P1L-D
Range (X, Y, Z-axis) with Vision Head	300 x 200 x 190 mm	400 x 400 x 240 mm	600 x 650 x 220 mm
Range with WLI Head	215 x 200 x 190 mm	315 x 400 x 240 mm	515 x 650 x 220 mm
Tube Lens WLI Head	2x	2x	2x
Repeatability WLI Head	$2\sigma \leq 0,08 \mu\text{m}$	$2\sigma \leq 0,08 \mu\text{m}$	$2\sigma \leq 0,08 \mu\text{m}$
Z-axis measuring range WLI Head	170 $\mu\text{m}$	170 $\mu\text{m}$	170 $\mu\text{m}$
Max. stage loading kg	15	25	35



Scan QR Code with your mobile device and watch our product videos on YouTube

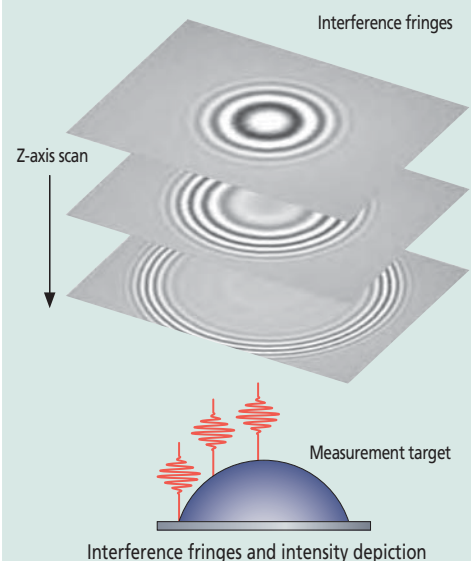
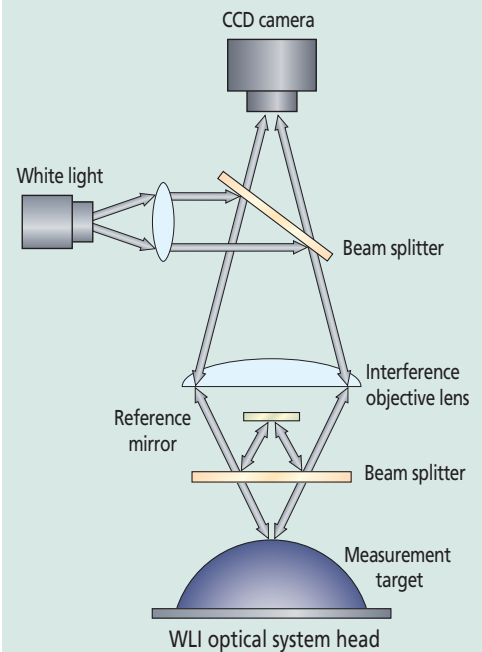
## Optional accessories

No.	Description
02ALT630	Lens for QV WLI A-10X magnification
02ALT670	Lens for QV WLI A-25X magnification
02ALY400	Lens for QV WLI A 5x magnification



## QV WLI Objective lenses

Magnification 10X: Field of View 0,32 x 0,24 mm  
 Magnification 25X: Field of View 0,128 x 0,096 mm  
 Magnification 5X: Field of View 0,64 x 0,48 mm



# UMAP Vision System Series

## UMAP : Ultra Micro Accurate Probe

The UMAP (Ultra Micro Accurate Probe) is a micro-form measuring system

The UMAP offers you the following benefits:

- Dual functions of high-accuracy contact and non-contact measurement in one machine.
- Contact (micro-stylus UMAP probe) and non-contact (vision probe) measuring probes are installed.
- You can measure micro-features of parts previously impossible to reach.
- Several diameters of micro-stylus are available from 15  $\mu\text{m}$  to 300  $\mu\text{m}$ .



UMAP Probe Unit

### UMAP Probes

(ultrasonic micro stylus probes)

Stylus ultrasonic micro-vibration and its amplitude-sensing enable UMAP probe to perform contact measurement of micro-features of parts.

5 choices of stylus tip diameter are available from 15  $\mu\text{m}$  to 300  $\mu\text{m}$ .



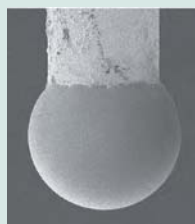
UMAP 101  
 $\phi 15 \mu\text{m}$   
L = 0.2 mm



UMAP 103  
 $\phi 30 \mu\text{m}$   
L = 2 mm



UMAP 107  
 $\phi 70 \mu\text{m}$   
L = 5 mm



UMAP 110  
 $\phi 100 \mu\text{m}$   
L = 10 mm



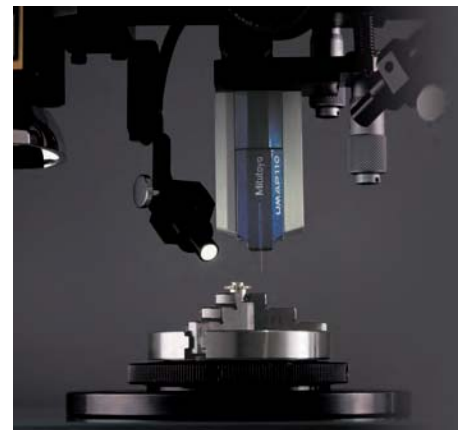
UMAP 130  
 $\phi 300 \mu\text{m}$   
L = 16 mm



Refer to the UMAP Vision system brochure



Hyper UMAP 302 Type 2



### Type 2 - QVPAK + CCD + UMAP Probe

Type	Hyper UMAP 302 Type 2	Ultra UMAP 404 Type 2
No.	364-7135Y	364-7175Y
Model	UVS2-H302P1L-D	UVS2-U404P1N-D
Range (X-, Y-axis) <sup>(1)</sup>	185 x 200 mm	285 x 400 mm
Range (Z-axis) <sup>(1)</sup>	- UMAP 101/103 : 175 mm - UMAP 107/110 : 180 mm - UMAP 130 : 185 mm	- UMAP 101/103 : 175 mm - UMAP 107/110 : 180 mm - UMAP 130 : 185 mm
Accuracy <sup>(2)</sup>	$E_{1(x,y)} = (0,8+0,2L/100) \mu\text{m}$ $E_{1(z)} = (1,5+0,2L/100) \mu\text{m}$	$E_{1(x,y)} = (0,25+0,1L/100) \mu\text{m}$ $E_{1(z)} = (1,5+0,2L/100) \mu\text{m}$
Repeatability ( $\sigma$ )	- UMAP 101/103/107 : 0,1 $\mu\text{m}$ - UMAP 110/130 : 0,15 $\mu\text{m}$	- UMAP 101/103/107 : 0,08 $\mu\text{m}$ - UMAP 110/130 : 0,12 $\mu\text{m}$

# M-NanoCoord

This newly developed 3D CNC ultra-high resolution measuring system is capable of the most precise movements, giving you unsurpassed form measurement accuracy in the nanometre region. The M-NanoCoord offers you the following benefits:

- Laser HoloScales with one nanometre resolution and virtually zero thermal expansion give you extreme measuring accuracy of (0,2+0,1L/100) µm.
- The fixed bridge, moving table construction and high-precision air bearings further improve the accuracy of your measurements.
- Particularly suitable for workpieces with very small dimensions, such as MEMS parts, integrated circuits, precision formed components, aspheric lenses.
- Every model of the M-NanoCoord Series has a newly developed ultra-high accuracy main unit with a vision probe as a standard accessory.
- Can be equipped with micro probe systems as a factory option.

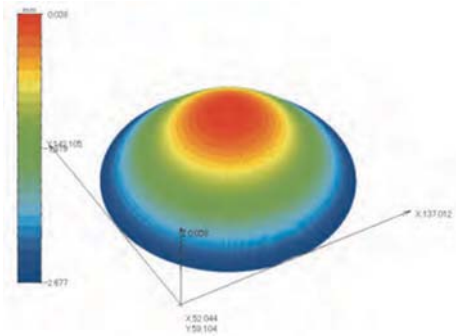


M-NanoCoord

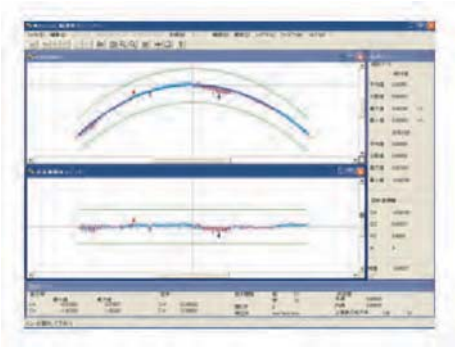
No.	Resolution [µm]	Range (X, Y, Z-axis) with Vision Head	Accuracy <sup>(1)</sup>
M-NanoCoord	1	200 x 200 x 100 mm	$E_{1(x,y)} = (0,2+0,1L/100) \mu\text{m}$

<sup>(1)</sup> According to Mitutoyo inspection method      L = measuring length (mm)

## Example of an M-NanoCoord-LNP measurement application



Aspherical lens measurement result



Aspherical lens analysis by lens section comparison

## Specifications

Main unit	<b>Structure</b> XY-plane guiding structure
	<b>Guiding method</b> Hydrostatic air bearing
	<b>Scales</b> Low-expansion laser holoScales
Vision Head	- Programmable Power Turret (PPT) - 4-quadrant LED (PRL) - High-sensitivity megapixel CCD camera
Factory options	- <b>UMAP Probes</b> Touch signal probe with a micro stylus (Refer the UMAP page for details)  <b>UMAP 101</b> ø15µm ; L=0,2 mm <b>UMAP 103</b> ø30 µm ; L=2 mm <b>UMAP 107</b> ø70 µm ; L=5 mm <b>UMAP 110</b> ø100 µm ; L=10 mm <b>UMAP 130</b> ø300 µm ; L=16 mm  - <b>LNP "Long-range Nano Probe"</b> Minute Form Probe



LNP Probe : Long range Nano Probe

LNP allows measurement of minute features on workpieces such as light guide plates, using a diamond stylus with tip radius of 2 µm (optional). LNP allows scanning measurement with steeply-inclined surfaces of ±80° and touch-probe measurement of ±90° by vibration-type contact scanning probe with ultra-low measuring force (min. measuring force : 10 µN).



# Software for Quick Vision Systems

## QVPAK

- QVPAK controls multiple sensors: CCD, Touch Probe, continuous scanning devices, special UMAP or LNP probes.
- Powerful mathematical algorithms are provided that help you to detect difficult edges via noise filters (similar to morphological filters) and advanced detection tools that take into account the texture of the target surface.
- Partprogramming and editing is made easy with the user friendly Easy Editor.
- 3D graphic display or measuring planes display with the QVClient QVGraphic.
- QVPAK also offers you various QVClients (standard), real assistants for users (programming mode) or operators (production mode) such as QVSmartEditor and QVNavigator.

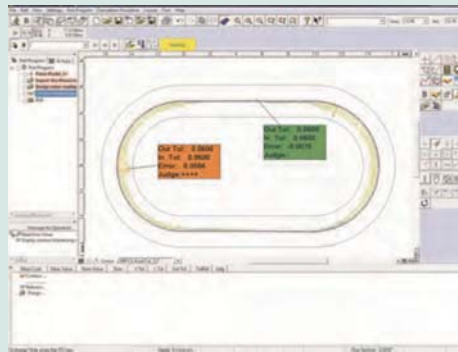
## Optional software modules for Quick Vision System

- Formtracepak-AP-QV for 2D contour analysis
- Formtracepak-Pro for 3D surface analysis
- QV Part Manager for managing the execution of parts programs of multiple parts
- Easypag-Pro for offline generation of part programs from 2D CAD data
- QV3DCAD-online for online generation of part programs from 3D CAD files
- MeasurLink for statistical process control (SPC)
- QV3DPAK for 3D topography measurements (see explanation below)
- For more information refer to the Vision Measuring Machines brochures

## Optional PFF Function (Points From Focus)

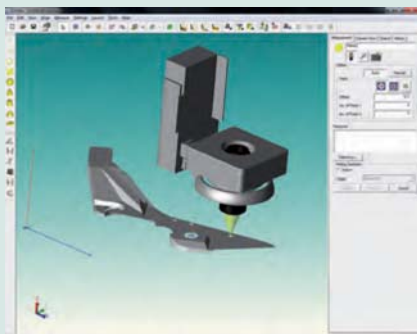
- PFF enhances the functionality of standard QV models with 3D topography measurements
- No additional sensor necessary
- High scanning range in Z axis from 2,7 mm upto 40,6 mm depending on the objective lens in use and in wide range mode
- PFF is a retro fittable option for Quick Vision ELF, Quick Vision APEX/HYPER, Quick Vision ACCEL and Quick Vision ULTRA.

Please contact your local Mitutoyo office for more detailed information.



**FORMTRACEPAK-AP**

- Simple and easy-to-use 2D contour analysis
- Graphic reports (geometry or scanning) edition
- Allows measurement by comparison
- For more information refer to FORMTRACEPAK-AP



**QV3DCAD-Online**

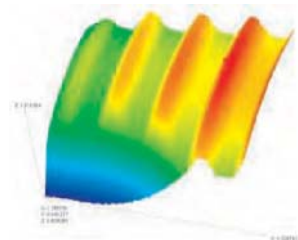
Automatic program generation from 3D CAD files issued from a CAD system (must be associated with a converter).



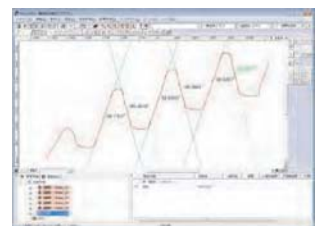
Vision Measuring Machines brochures on request



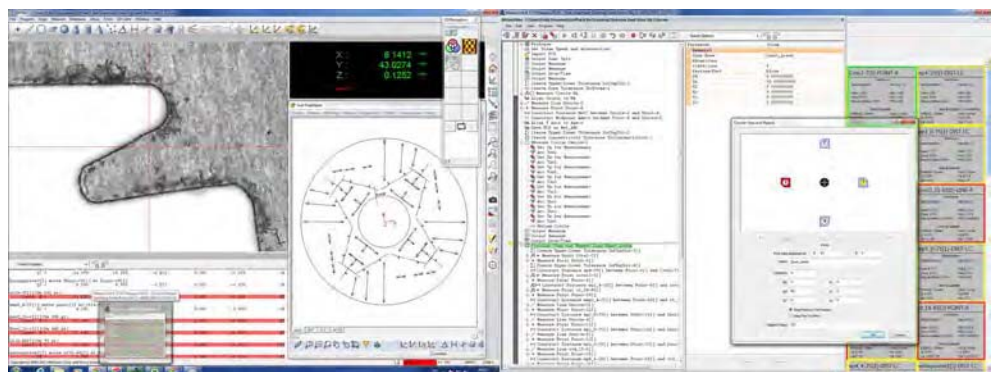
Workpiece to be measured with PFF



3D Analysis of PFF measurement



2D Analysis of PFF measurement



Example of the QVPAK screen layout.



# Accessories for Quick Vision Systems

## Touch Probe Option - Series 364

An optional touch probe (TP) is available for following QV models:

Quick Vision-ELF ; Quick Vision-APEX ; Quick Vision-HYPER ; Quick Vision-ACCEL.

- The Quick Vision-TP system allows you to carry out both non-contact and contact measurements.
- Compatible with Renishaw Touch Probe TP 20 or TP 200.
- An optional MCR20 rack for storing probe modules enhances functionality even more.



Quick Vision-ELF with Touch Probe option



Quick Vision-ELF with Touch Probe and MCR20-3 change rack



Quick Vision-APEX with Touch Probe option



TP20  
Compact stylus change type.



TP200  
Compact and high accuracy stylus change type



Styli kit M2  
Starter



Quick Vision-ELF models



QV-APEX and HYPER models



Quick Vision Accel models



Refer to the Quick Vision brochure

# Accessories for Quick Vision Systems

## Tracking Auto Focus

### Tracking Auto Focus Function TTL (Through The Lens) \*

For Quick Vision-APEX, Quick Vision-HYPER, Quick Vision-STREAM PLUS, Quick Vision-ULTRA  
The Tracking Auto Focus unit (TAF) allows stable, high-speed measurement in the Z-axis, due to the Knife-edge method adopted in the detection system.

The TAF function tracks the waviness and warp of the workpiece surface in Z direction and enhances throughput compared with normal measuring mode.

When TAF is used on a Quick Vision Stream Plus model, fully non-stop measurements become possible.



Coaxial laser Tracking Auto Focus (TAF)



Laser spot of Tracking Auto Focus system (TAF)



Measurement example : Height of leads on a QFP package

TAF (Tracking Auto Focus)\*

No.	Objective lens	Tracking range [mm]	Laser spot diameter [μm]
TAF-HR2,5X	QV-HR2,5X	±0,5	2,1
TAF-SL2,5X	QV-SL2,5X	±0,5	3,1
TAF-5X	QV-5X	±0,125	1,5
TAF-HR1X	QV-HR1X	±3,15	5,2
TAF-SL1X	QV-SL1X	±3,15	8

\*factory option

### Specifications

#### QV Index Head

Automatic multi-plane measurement is possible with the optional index table

Min. rotation angle	0,1 °
Max. rotation speed	10 rpm
Positioning Accuracy	±0,5°
Max. workpiece ø [mm]	140

### QV Index Head

Using the QV Index to rotate the workpiece makes it possible to automatically measure multiple surface without having to dismount/remount the workpiece.



# Objective Lenses and Calibration Charts

## Objective Lenses and Calibration Charts

No.	Model
02ALT630	QV WLI A-10X
02ALT670	QV WLI A-25X
02ALY400	QV WLI A-5X

### 1. QV-Objective lens - HR and SL (Long Working Distance) models

No.	Magnification	Model	Turret lens Mag. QV	Monitor Mag. QV	Working distance [mm]
02AKT199	0,5X	QV-SL0,5X	1X	16X	30,5
			2X	32X	
			6X	96X	
02ALA150	1X	QV-SL1X	1X	32X	52,5
			2X	64X	
			6X	192X	
02ALA170	2,5X	QV-SL2,5X	1X	80X	60
			2X	160X	
			6X	480X	
02ALA420	5X	QV-5X	1X	160X	33,5
			2X	320X	
			6X	960X	
02ALG010	10X	QV-SL10X	1X	320X	30,5
			2X	640X	
			6X	1920X	
02ALG020	25X	QV-25X	1X	800X	13
			2X	1600X	
			6X	4800X	
02AKT250	1X	QV-HR1X	1X	32X	40,6
			2X	64X	
			6X	192X	
02AKT300	2,5X	QV-HR2,5X	1X	80X	40,6
			2X	160X	
			6X	480X	
02AKT650	10X	QV-HR10X	1X	320X	20
			2X	640X	
			6X	1920X	

### 2. Other accessories

No.	Model
02ATN695	Calibration chart with holder
02ATN697	Compensation chart with holder

### Additional Specifications

- Remarks
- The monitor magnifications are approximate values.
  - QV-10X, QV-25X : Depending on the workpiece the illumination may be insufficient at a turret lens magnification of 2X and 6X for QV models.
  - QV-25X : The PRL illumination is restricted in its usable position.



**Calibration Glass chart & Compensation glass chart with holder**  
A calibration or compensation chart is used to calibrate or compensate for the pixel size of the CCD sensor, autofocus accuracy and the optical axis offset at each magnification of the Programmable Power Turret (PPT) or of the zoom.

# Modular Clamping System OPTI-FIX

## The modular clamping system for vision measuring systems

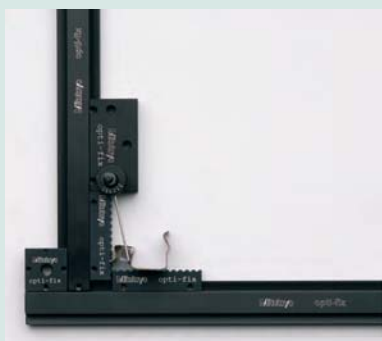
This modular and flexible clamping system is ideal for use with vision measuring systems including profile projectors, measuring microscopes and image analysis measuring machines.

OPTI-FIX offers you the following benefits:

- The system's highly compact components enable you to keep parts in the required position during measurement.
- It enables you to make reliable repeated measurements on a batch of parts, or measurements in particular positions.
- The system elements are assembled with dovetail joints.
- You are offered a choice of several kits.



Holding a cylindrical part between clamping tips.



Toothed rule that lets light pass  
Spring flange locking the part in the measurement position.



Batch measurement of identical parts placed against the right-angled frame.



Refer to the OPTI-FIX brochure

No.	Model	Description
K551056	Opti-Set Start	- Comprising 16 elements - Construction of a right-angled frame of dimensions 250x100mm
K551057	Opti-Set Basic	- Comprising 26 elements - Construction of a frame of dimensions 200x100mm
K551059	Opti-Set Advanced	- Comprising 51 elements - Construction of a frame of dimensions 400x250mm - Allows aerial positioning of parts
K551060	Opti-Set Professional	- Comprising 115 elements - Construction of frame of dimensions 400x250mm - Complete and highly versatile kit
K551058	Opti-Set Rotation	- Comprising 23 elements - Construction of frame of dimensions 250x200mm - Including accessories for holding cylindrical parts
K550298	Opti-Set Round	- Comprising 18 elements allowing aerial positioning of complex parts - This kit is supplied in a case (see photo below)
K550989	Adjustable magnetic clamp	Only 3 clamps are necessary to hold the OPTI-FIX clamping system to the machine surface

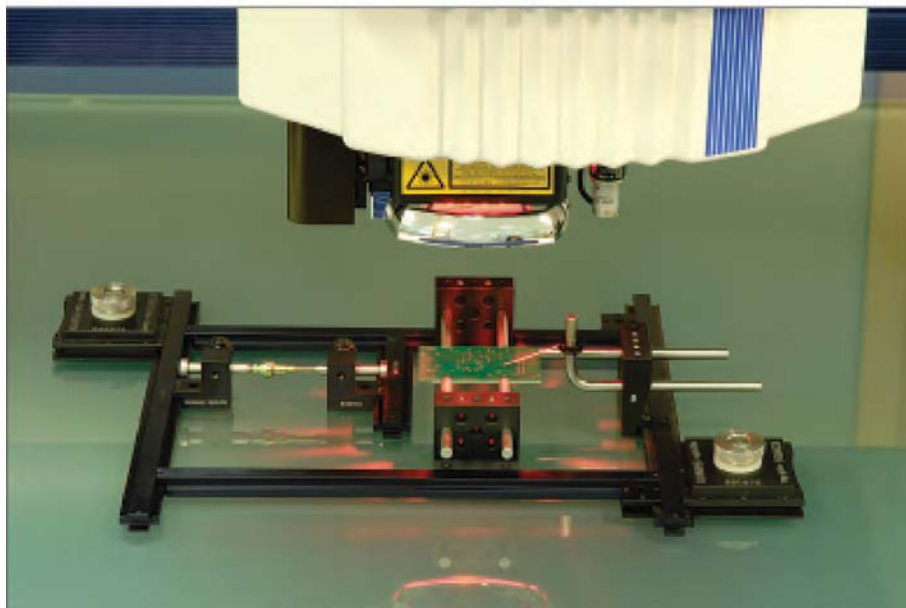


Opti-Set Round

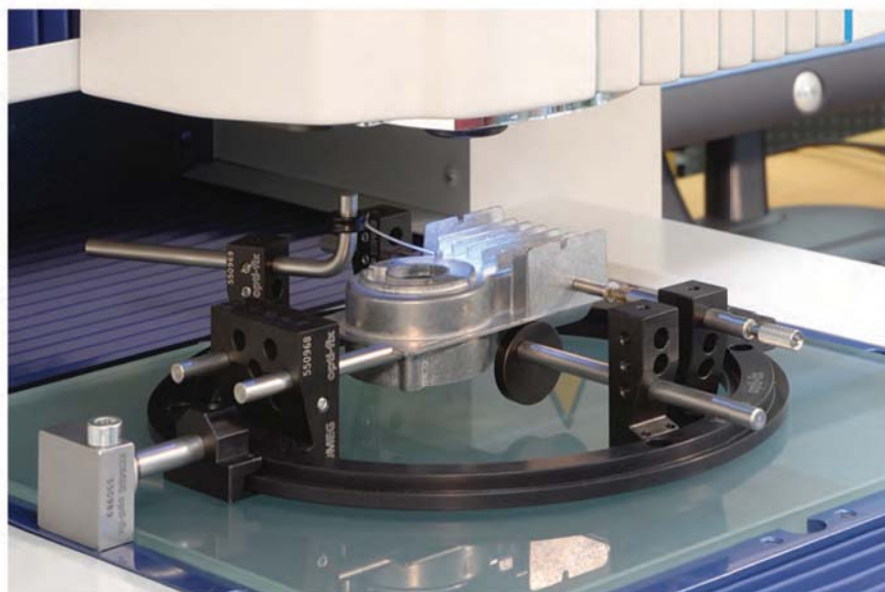


# Modular Clamping System OPTI-FIX

## OPTI-FIX Clamping System



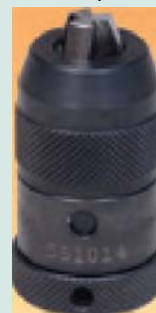
Electronic board raised to give clearance for the components on its underside. Placed directly on the glass stage of the machine without the OPTI-FIX clamping system, the electronic board would not lie flat. The set-up is held on the glass surface by 2 suction



Example of application for holding prismatic parts (without the OPTI-FIX clamping system, the part could not be positioned correctly). The set-up is held on the glass surface by a magnetic clamp attached to the stage frame.



Mini-vice (internal-external)



Precision quick chuck



Clamping jaw



Jaw tip ø0-2



Jaw tip ø1-3



Jaw tip ø4-5



Perpendicular jaw tip



OPTI-FIX brochure on request